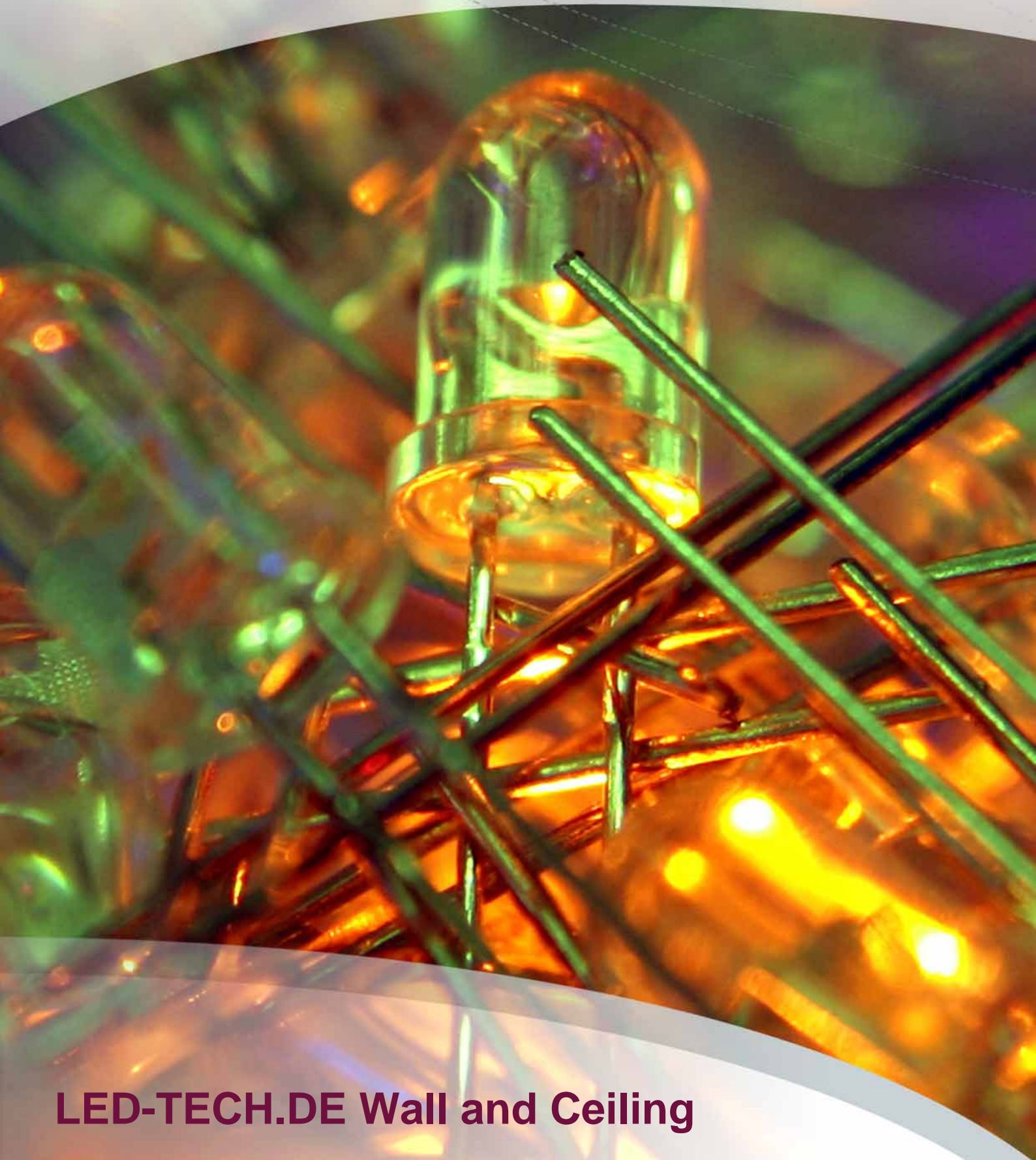


**LED-TECH.DE**  
OPTOELECTRONICS



**LED-TECH.DE Wall and Ceiling**

## Gooseneck for GU10 Spots (230V)



Part Number: LT-0448

Housing Color: glance-chrome

V typ.: 230 V

High quality and very stable gooseneck for GU10 illuminants (LED and halogen) with 230V socket and integrated on/off switch. Allows individual adjusting of your spots.

Easy concept, nice optic and useable everywhere. Please do not use with illuminants higher than 50W.

Total length: 44,5cm

Head diameter: 3,5cm

Gooseneck: 34,5cm

(Illuminants not included)



## Gooseneck with GX53 LED head (230V) (white)



High quality and very stable gooseneck with 230V socket and integrated on/off switch. Allows individual adjusting of the illuminant.

Easy concept, nice optic and useable everywhere. The LED head with 29x LEDs is included of course.

Total length: 54cm

Head diameter: 8,5cm

Gooseneck: 34,5cm

(Illuminants included)

Part Number: LT-1657

Viewing Angle: 120°

Housing Color: glance-chrome

Emitting Color: white

Lumen typ.: 70 mcd

Kelvin typ.: 6500 mcd

V typ.: 230 V

## Gooseneck with GX53 LED head (230V) (warm white)



Part Number: LT-1658

Viewing Angle: 120°

Housing Color: glance-chrome

Emitting Color: warm white

Lumen typ.: 53 mcd

Kelvin typ.: 3500 mcd

V typ.: 230 V

High quality and very stable gooseneck with 230V socket and integrated on/off switch. Allows individual adjusting of the illuminant.

Easy concept, nice optic and useable everywhere. The LED head with 29x LEDs is included of course.

Total length: 54cm

Head diameter: 8,5cm

Gooseneck: 34,5cm

(Illuminants included)

## Gooseneck with High Power LED (230V) (white)



Part Number: LT-1659

Viewing Angle: 40°

Housing Color: glance-chrome

Emitting Color: white

Lumen typ.: 100 mcd

Kelvin typ.: 6500 mcd

V typ.: 230 V

High quality and very stable gooseneck with 230V socket and integrated on/off switch. Allows individual adjusting of the illuminant.

Easy concept, nice optic and useable everywhere. The 1W high power LED illuminant is included of course.

Total length: 47,8cm

Head diameter: 3,5cm

Head length: 6,4cm

Gooseneck: 34,5cm

(Illuminants included)



## Gooseneck with High Power LED (230V) (warm white)



Part Number: LT-1660

Viewing Angle: 40°

Housing Color: glance-chrome

Emitting Color: warm white

Lumen typ.: 70 mcd

Kelvin typ.: 3500 mcd

V typ.: 230 V

High quality and very stable gooseneck with 230V socket and integrated on/off switch. Allows individual adjusting of the illuminant.

Easy concept, nice optic and useable everywhere. The 1W high power LED illuminant is included of course.

Total length: 47,8cm

Head diameter: 3,5cm

Head length: 6,4cm

Gooseneck: 34,5cm

(Illuminants included)



## SmartEnergy LED-Disc (white)



Curious aluminium luminaire with opal glass front. It emits light through the front glass as well as a circle light output on the back. This causes a very nice aura effects on the wall.

- Drill hole diameter: 7,6cm
- Mounting depth: 5cm
- LED converter: excl.

Please use a 350mA power supply for this product. Above mentioned link show a choice of useable power supplies. You can run more than one of these lights in series connection. To choose the correct power supply just watch the mentioned number of LEDs it is useable with. If you have any questions or problems finding the right components please ask our support.

Part Number: LT-1661

Diameter: 15cm

Housing Color: silver

Emitting Color: white

Lumen typ.: 80 mcd

Kelvin typ.: 6500 mcd

mA typ.: 350 mA



## SmartEnergy LED-Disc (blue)



Curious aluminium luminaire with opal glass front. It emits light through the front glass as well as a circle light output on the back. This causes a very nice aura effects on the wall.

- Drill hole diameter: 7,6cm
- Mounting depth: 5cm
- LED converter: excl.

Part Number: LT-1662

Diameter: 15cm

Housing Color: silver

Emitting Color: blue

Lumen typ.: 10 mcd

mA typ.: 350 mA

Please use a 350mA power supply for this product. Above mentioned link show a choice of useable power supplies. You can run more than one of these lights in series connection. To choose the correct power supply just watch the mentioned number of LEDs it is useable with. If you have any questions or problems finding the right components please ask our support.



## SmartEnergy ICE-LED I (white)



Part Number: LT-1663

Diameter: 4cm

Viewing Angle: 360°

Housing Color: silver

Emitting Color: white

Lumen typ.: 100 mcd

Kelvin typ.: 6500 mcd

mA typ.: 350 mA

The CRYSTAL GLASS effect!

With only 4cm diameter a very nice lighting element for almost any location. You only need 3cm drill whole diameter and 3cm mounting depth. Thats all.

This illumination design object is available in three versions and two color temperatures each (cold-white/warm-white)

- LED converter: excl.

Please use a 350mA power supply for this product. Above mentioned link show a choice of useable power supplies. You can run more than one of these lights in series connection. To choose the correct power supply just watch the mentioned number of LEDs it is useable with. If you have any questions or problems finding the right components please ask our support.

## SmartEnergy ICE-LED I (warm white)



Part Number: LT-1664

Diameter: 4cm

Viewing Angle: 360°

Housing Color: silver

Emitting Color: warm white

Lumen typ.: 70 mcd

Kelvin typ.: 3500 mcd

mA typ.: 350 mA

The CRYSTAL GLASS effect!

With only 4cm diameter a very nice lighting element for almost any location. You only need 3cm drill whole diameter and 3cm mounting depth. Thats all.

This illumination design object is available in three versions and two color temperatures each (cold-white/warm-white)

- LED converter: excl.

Please use a 350mA power supply for this product. Above mentioned link show a choice of useable power supplies. You can run more than one of these lights in series connection. To choose the correct power supply just watch the mentioned number of LEDs it is useable with. If you have any questions or problems finding the right components please ask our support.

## SmartEnergy ICE-LED III (white)



The CRYSTAL GLASS effect!

With only 4cm diameter a very nice lighting element for almost any location. You only need 3cm drill whole diameter and 3cm mounting depth. Thats all.

This illumination design object is available in three versions and two color temperatures each (cold-white/warm-white)

- LED converter: excl.

Please use a 350mA power supply for this product. Above mentioned link show a choice of useable power supplies. You can run more than one of these lights in series connection. To choose the correct power supply just watch the mentioned number of LEDs it is useable with. If you have any questions or problems finding the right components please ask our support.

Part Number: LT-1667

Diameter: 4cm

Viewing Angle: 360°

Housing Color: silver

Emitting Color: white

Lumen typ.: 100 mcd

Kelvin typ.: 6500 mcd

mA typ.: 350 mA

## SmartEnergy Massive Round (white)



Massive and heavy LED unit with 3 high power LEDs made from aluminium.

- Illuminants: 3x 1W LEDs in series connection
- Mounting hole diameter: 4cm
- Mounting depth: 11cm
- LED converter: excl.

Please use a 350mA power supply for this product. Above mentioned link show a choice of useable power supplies. You can run more than one of these lights in series connection. To choose the correct power supply just watch the mentioned number of LEDs it is useable with. If you have any questions or problems finding the right components please ask our support.

Part Number: LT-1669

Diameter: 7,5cm

Viewing Angle: 50°

Housing Color: brushed-metal

Emitting Color: white

Lumen typ.: 300 mcd

Kelvin typ.: 6500 mcd

mA typ.: 350 mA

## SmartEnergy Massive Round (warm white)



Massive and heavy LED unit with 3 high power LEDs made from aluminium.

- Illuminants: 3x 1W LEDs in series connection
- Mounting hole diameter: 4cm
- Mounting depth: 11cm
- LED converter: excl.

Please use a 350mA power supply for this product. Above mentioned link show a choice of useable power supplies. You can run more than one of these lights in series connection. To choose the correct power supply just watch the mentioned number of LEDs it is useable with. If you have any questions or problems finding the right components please ask our support.

Part Number: LT-1670

Diameter: 7,5cm

Viewing Angle: 50°

Housing Color: brushed-metal

Emitting Color: warm white

Lumen typ.: 210 mcd

Kelvin typ.: 3500 mcd

mA typ.: 350 mA

## SmartEnergy Massive Square (warm white)



Massive and heavy LED unit with 3 high power LEDs made from aluminium.

- Illuminants: 3x 1W LEDs in series connection
- Mounting hole diameter: 4cm
- Mounting depth: 11cm
- LED converter: excl.

Please use a 350mA power supply for this product. Above mentioned link show a choice of useable power supplies. You can run more than one of these lights in series connection. To choose the correct power supply just watch the mentioned number of LEDs it is useable with. If you have any questions or problems finding the right components please ask our support.

Part Number: LT-1672

Viewing Angle: 50°

Housing Color: brushed-metal

Emitting Color: warm white

Lumen typ.: 210 mcd

Kelvin typ.: 3500 mcd

mA typ.: 350 mA

## SmartEnergy Massive Oval (white)



Massive and heavy LED unit with 3 high power LEDs made from aluminium.

- Illuminants: 3x 1W LEDs in series connection
- Mounting hole diameter: 9x4cm
- Mounting depth: 11cm
- LED converter: excl.

Part Number: LT-1673

Viewing Angle: 50°

Housing Color: brushed-metal

Emitting Color: white

Lumen typ.: 300 mcd

Kelvin typ.: 6500 mcd

mA typ.: 350 mA

Please use a 350mA power supply for this product. Above mentioned link show a choice of useable power supplies. You can run more than one of these lights in series connection. To choose the correct power supply just watch the mentioned number of LEDs it is useable with. If you have any questions or problems finding the right components please ask our support.

## SmartEnergy Massive Oval (warm white)



Massive and heavy LED unit with 3 high power LEDs made from aluminium.

- Illuminants: 3x 1W LEDs in series connection
- Mounting hole diameter: 9x4cm
- Mounting depth: 11cm
- LED converter: excl.

Part Number: LT-1674

Viewing Angle: 50°

Housing Color: brushed-metal

Emitting Color: warm white

Lumen typ.: 210 mcd

Kelvin typ.: 3500 mcd

mA typ.: 350 mA

Please use a 350mA power supply for this product. Above mentioned link show a choice of useable power supplies. You can run more than one of these lights in series connection. To choose the correct power supply just watch the mentioned number of LEDs it is useable with. If you have any questions or problems finding the right components please ask our support.

## SmartEnergy Massive Square ICE (warm white)



Massive and heavy LED unit with 3 high power LEDs with massive and self-illuminating front made from Acryll.

- Illuminants: 3x 1W LEDs in series connection
- Mounting hole diameter: 9,5x4cm
- Mounting depth: 11cm
- LED converter: excl.

Part Number: LT-1676

Viewing Angle: 50°

Housing Color: brushed-metal

Emitting Color: warm white

Lumen typ.: 210 mcd

Kelvin typ.: 3500 mcd

mA typ.: 350 mA

Please use a 350mA power supply for this product. Above mentioned link show a choice of useable power supplies. You can run more than one of these lights in series connection. To choose the correct power supply just watch the mentioned number of LEDs it is useable with. If you have any questions or problems finding the right components please ask our support.

# Imprint



LED-TECH.DE optoelectronics Showroom

Director: Stefan Lenz

Am Schürmannshütt 38B

D-47441 Moers

Phone: (+49) 2841 / 97 91 7-0

Fax: (+49) 2841 / 97 91 7-29



Further we want to point at pictures, graphics and descriptions as well as the pagelayout itself which are all subject to copyright. Every offence will be prosecuted.

All mentioned prices are to be understood as gross prices including the value added tax (TAV). All offers are subject to prior sales and without commitment. Delivery times are to be understood from date of receipt of order. Mistakes and changes in prices are always reserved.



