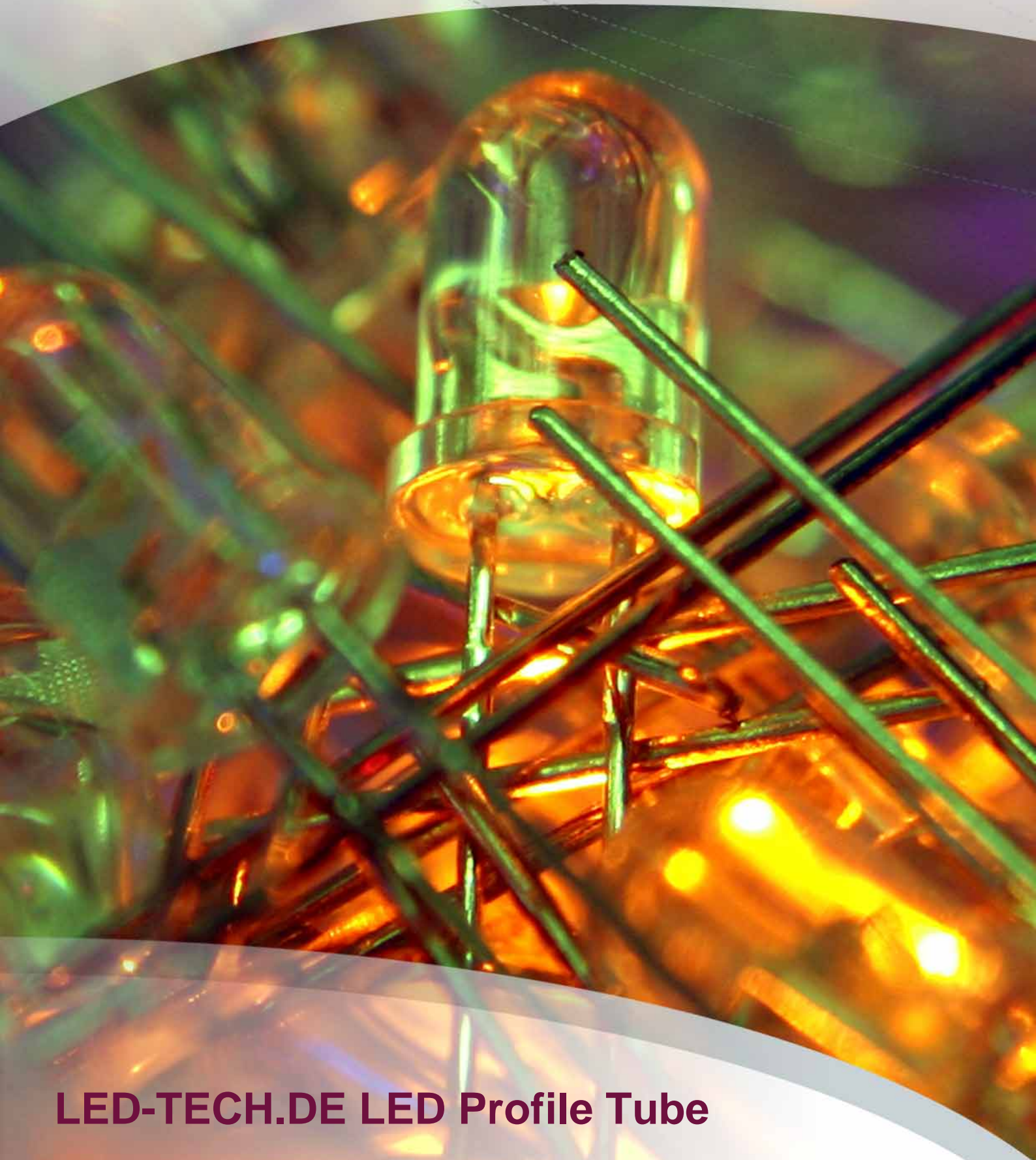


LED-TECH.DE
OPTOELECTRONICS



LED-TECH.DE LED Profile Tube

LED Profile TUBE (100cm)



Part Number: LT-1296

Housing Color: alu-silver

High quality untreated round aluminium LED profile for 10mm PCBs. The profile is available in different lengths (25,50,100cm).

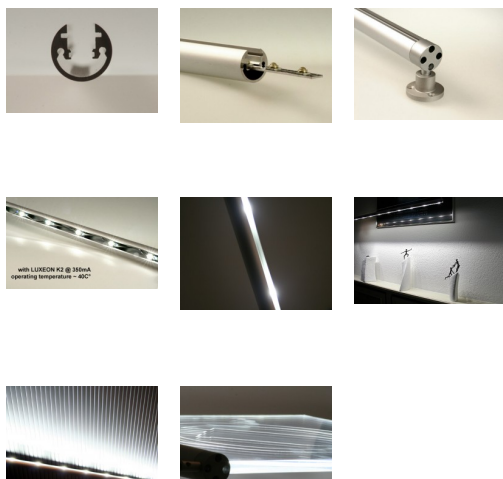
We also offer a full range of assembly and mounting supply in this product category. Please have a look at the picture gallery to see a few of the whole range of mounting possibilities.

Technical data:

- Profile material: Aluminium
- Profile length: 100cm
- Profile height: 2.5cm
- Profile width: 2.5cm

- Set with end caps: LT-1299
- Set for wall and seeling mounting: LT-1300

- Weight: ~200g



LED Profile TUBE (50cm)



Part Number: LT-1297

Housing Color: alu-silver

High quality untreated round aluminium LED profile for 10mm PCBs. The profile is available in different lengths (25,50,100cm).

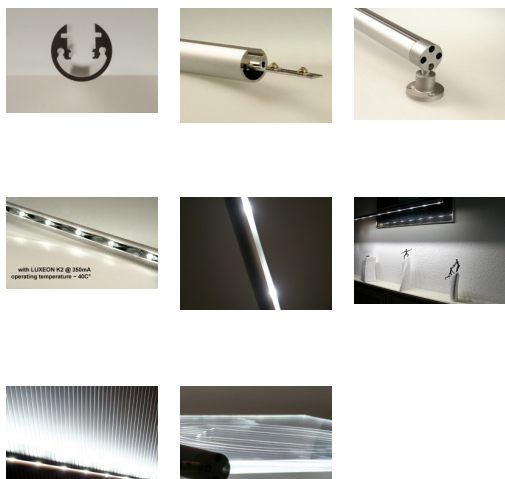
We also offer a full range of assembly and mounting supply in this product category. Please have a look at the picture gallery to see a few of the whole range of mounting possibilities.

Technical data:

- Profile material: Aluminium
- Profile length: 50cm
- Profile height: 2.5cm
- Profile width: 2.5cm

- Set with end caps: LT-1299
- Set for wall and ceiling mounting: LT-1300

- Weight: ~200g



LED Profile TUBE (25cm)



Part Number: LT-1298

Housing Color: alu-silver

High quality untreated round aluminium LED profile for 10mm PCBs. The profile is available in different lengths (25,50,100cm).

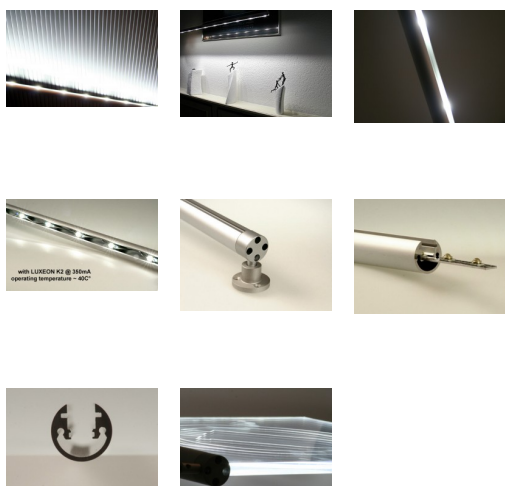
We also offer a full range of assembly and mounting supply in this product category. Please have a look at the picture gallery to see a few of the whole range of mounting possibilities.

Technical data:

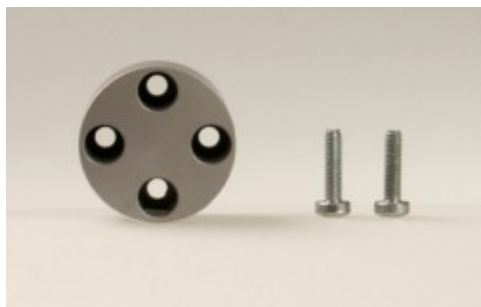
- Profile material: Aluminium
- Profile length: 25cm
- Profile height: 2.5cm
- Profile width: 2.5cm

- Set with end caps: LT-1299
- Set for wall and seeling mounting: LT-1300

- Weight: ~200g



End cap for TUBE profile



Aluminium end cap for TUBE profiles. A clean optic with variable cable output.

The end cap has four drill holes to mount the cable output in the direction you like. It is changeable in 90° steps. The cap gets mounted with two screws. This set contains

1x TUBE end cap

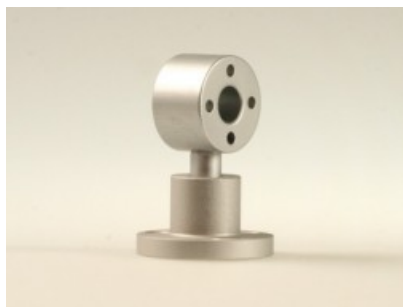
2x TUBE assembly screws

Part Number: LT-1299

Housing Color: alu-silver



Wall and sealing flange for TUBE profile



Part Number: LT-1300

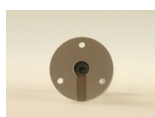
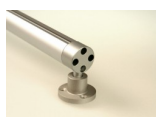
Housing Color: alu-silver

Flange for mounting the TUBE profile on walls or sealings. High quality aluminium components with variable height and complete cable lead through

from
TUBE profile
through
End cap
through
Distance tube
through
Wall & sealing flange

and from there to any other point. Please have a look at the picture gallery. This sets contains:

1x Aluminium end cap
1x Aluminium distance tube
1x Aluminium flange for walls and sealings
1x Screw for fixing the distance tube in the flange



Imprint



LED-TECH.DE optoelectronics Showroom

Director: Stefan Lenz

Am Schürmannshütt 38B

D-47441 Moers

Phone: (+49) 2841 / 97 91 7-0

Fax: (+49) 2841 / 97 91 7-29

Further we want to point at pictures, graphics and descriptions as well as the pagelayout itself which are all subject to copyright. Every offence will be prosecuted.

All mentioned prices are to be understood as gross prices including the value added tax (TAV). All offers are subject to prior sales and without commitment. Delivery times are to be understood from date of receipt of order. Mistakes and changes in prices are always reserved.



