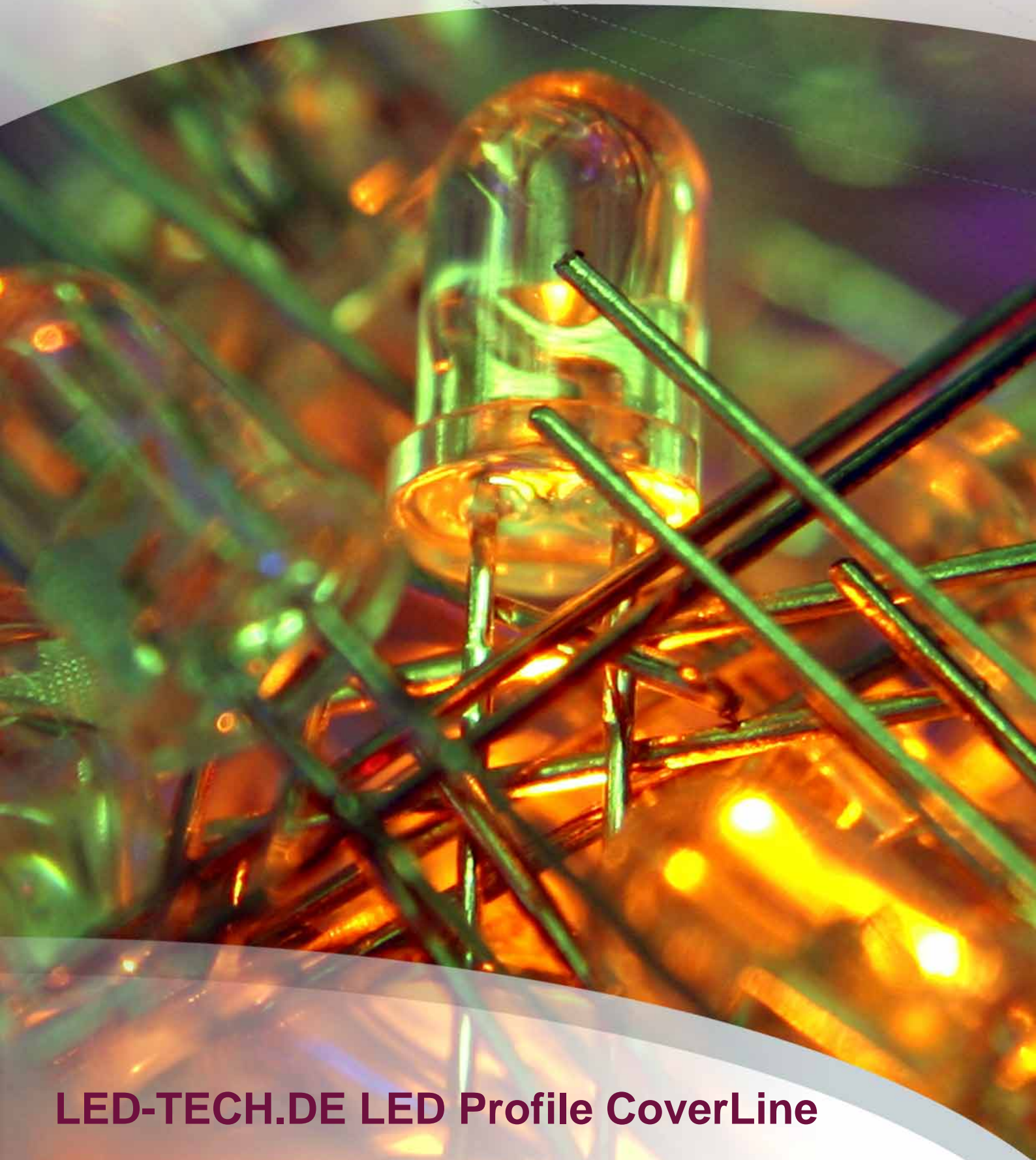


LED-TECH.DE

OPTOELECTRONICS



LED-TECH.DE LED Profile CoverLine

CoverLine Aluminium LED Profile



Part Number: LT-1512

Housing Color: alu-silver

1kg aluminium for best cooling!

High quality anodized aluminium LED profile with transparent PMMA cover for all common LED PCBs with a maximum width up to 25mm. The concept is as easy as simple: The PCB get sticked or glued (recommended) into the profile and the PMMA cover sticked onto it. It is very easy to handle.

Please note that we sell the CoverLine profiles in two versions: One with transparent cover (LT-1512) and one with opal white (diffused) cover (LT-1513).

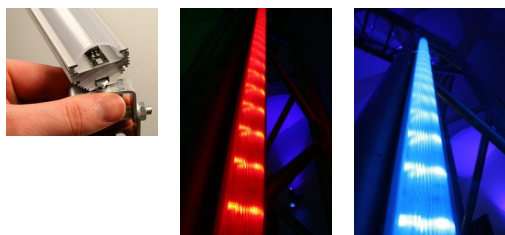
Mounting this part is very easy too because there are many different possibilities to do that. It can be screwed, glued or mounted by using the bottom side notch. Please have a look at the picture galerie on the left, too.

- Profile material: Aluminium (anodized)
- Profile length: 1000mm
- Profile height: 20mm
- Profile width: 35mm

- Inlay material: Transparent PMMA plastic
- Inlay length: 1000mm
- Inlay height: 15mm
- Inlay width: 30mm

- Top hat rail width: 8.3/5.2mm
- Delivery: 1m profile, 1m cover
- Weight/m: ~1000g

Delievery in other lengths also possible on request.



CoverLine Aluminium LED Profile



Part Number: LT-1513

Housing Color: alu-silver

1kg aluminium for best cooling!

High quality anodized aluminium LED profile with opal-white PMMA cover for all common LED PCBs with a maximum width up to 25mm. The concept is as easy as simple: The PCB get sticked or glued (recommended) into the profile and the PMMA cover sticked onto it. It is very easy to handle.

Please note that we sell the CoverLine profiles in two versions: One with transparent cover (LT-1512) and one with opal white (diffused) cover (LT-1513).

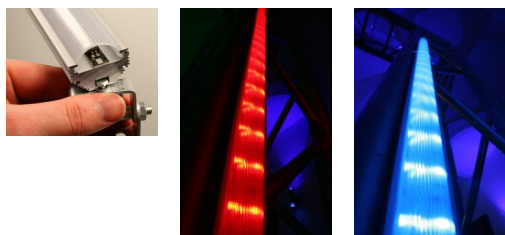
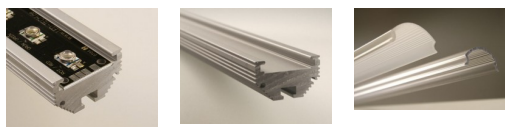
Mounting this part is very easy too because there are many different possibilities to do that. It can be screwed, glued or mounted by using the bottom side notch. Please have a look at the picture galerie on the left, too.

- Profile material: Aluminium (anodized)
- Profile length: 1000mm
- Profile height: 20mm
- Profile width: 35mm

- Inlay material: Opal white PMMA plastic
- Inlay length: 1000mm
- Inlay height: 15mm
- Inlay width: 30mm

- Top hat rail width: 8.3/5.2mm
- Delivery: 1m profile, 1m cover
- Weight/m: ~1000g

Delievery in other lengths also possible on request.



Coverline Set of End caps



Set with 2 end caps for the CoverLine profiles. The caps have the same outline as the profile to fit perfectly. The caps get mounted with two (included) screws.

Included in delivery:

1x Aluminium end cap

1x Aluminium end cap with cable feedthrough

4x Screws

Part Number: LT-1523

Housing Color: alu-silver



Imprint



LED-TECH.DE optoelectronics Showroom

Director: Stefan Lenz

Am Schürmannshütt 38B

D-47441 Moers

Phone: (+49) 2841 / 97 91 7-0

Fax: (+49) 2841 / 97 91 7-29

Further we want to point at pictures, graphics and descriptions as well as the pagelayout itself which are all subject to copyright. Every offence will be prosecuted.

All mentioned prices are to be understood as gross prices including the value added tax (TAV). All offers are subject to prior sales and without commitment. Delivery times are to be understood from date of receipt of order. Mistakes and changes in prices are always reserved.



