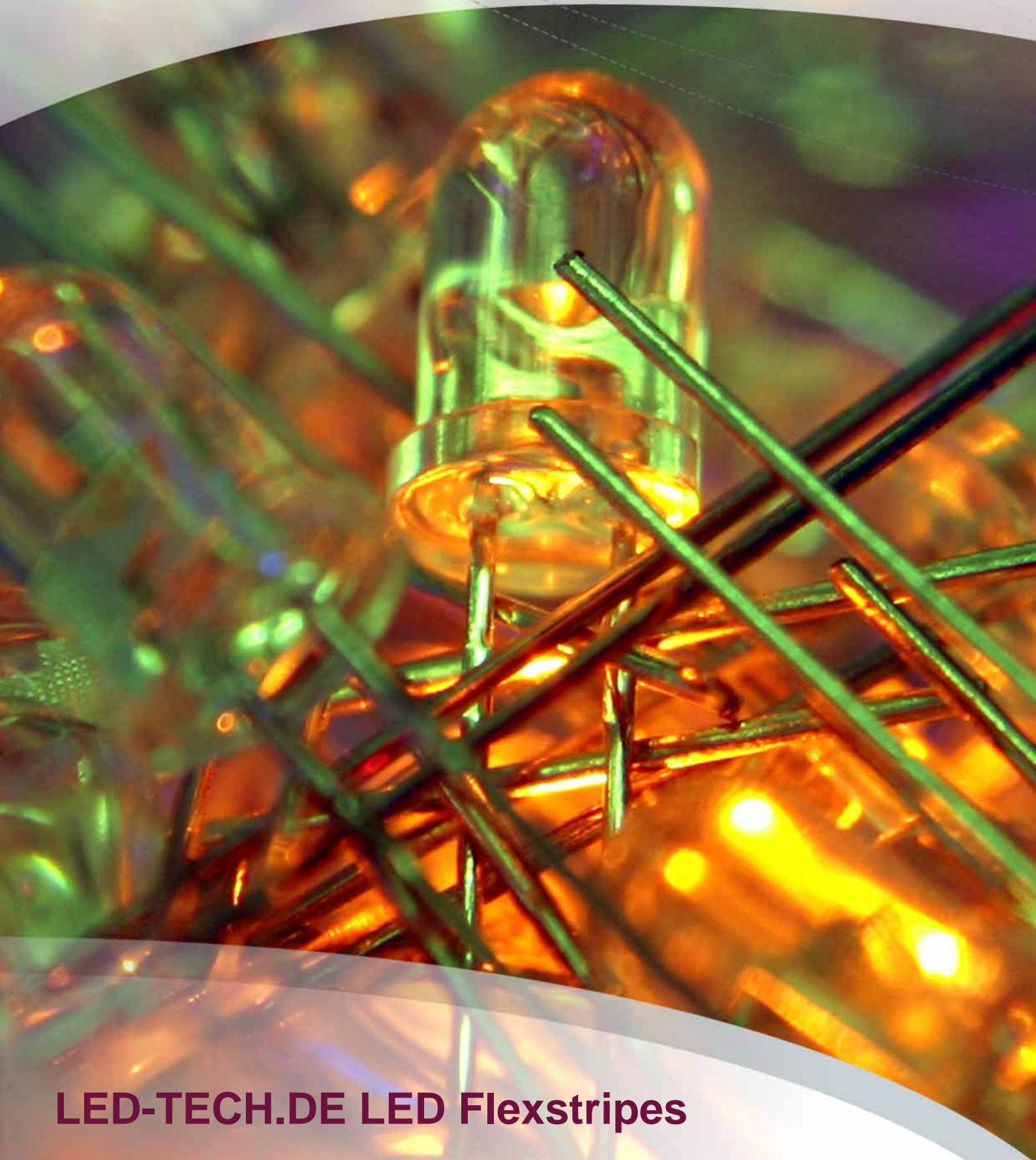


LED-TECH.DE
OPTOELECTRONICS



LED-TECH.DE LED Flexstripes

Miniature Constant Power Module 12V (1.5A)



Part Number: LT-0445

Housing Color: black

Extremely small and high quality stabilized power supply with unbelievable 1.5 Amperes.

Technical Data:

- Input: 230 V
- Output: 12 V
- Full charge: 12 V (1,5 A)
- Without charge: 13,8 V (1,5 A)
- Max. efficiency: 18 W
- Short circuit protected
- Overload protection
- Input frequency: 47-63Hz
- Oper. Temp.: -10 to 60°C
- Dimensions: 50 x 20 x 35mm
- Weight: 50g

Power Supply MeanWell 12V / 5.0A / 60W



Part Number: LT-0721

Housing Color: alu-silver

mA typ.: 5000 mA

V typ.: 12 V

High quality switching power supply with integrated noise filter. Closed versions with screw clamps and very low periodic and random deviation. Overload protection, auto recovery and short circuit protection are (of course) integrated, too.

This power supply is able to run hundreds of through hole LEDs. Because of the constant high power output big CCFL applications are no problem anymore, too. You can run about a dozen of cold cathodes. If you have any questions regarding your own application just talk to our Support.

Technical Data:

- Type: Switching Power Supply
- Input: 85-264 VAC
- Input: 120-370 VDC
- Inrush Current: 60 A
- Output: 12 VDC
- Current: 5.0 A
- Overload Protection: yes
- Short Circuit Protection: yes
- Efficiency: >73 %
- Tolerance: +/- 2%
- Ripple: 120 mV
- Length: 159 mm
- Width: 97 mm
- Height: 38 mm
- Connection: screw clamps

Switching Power Supply 3-12V



Part Number: LT-1283

Housing Color: black

High quality, stabilized switching power supply with control lamp and different connectors.

In addition this new PWM regulator is designed with the output voltage selector at the back side of the case. This ensures that the (end) user cannot (accidentally) change the output voltage when the adaptor is in use.

Technical Data:

- Input: 100-240V (50-60Hz, 16.5W max.)
- Adjustable Output: 3, 4.5, 6, 7.5, 9, 12 V
- CE certificated
- short circuit protection
- overload protection
- overheating protection

LED Flexstripe SMD (5m Reel) (white)



Part Number: LT-1382

Viewing Angle: 120°

Emitting Color: white

Lumen typ.: 1000 mcd

Kelvin typ.: 6500 mcd

V typ.: 12 V

New LED flex stripe with high quality PLCC2 SMD LEDs and extrem good cost/performance ratio. The LEDs main advantages are low power consumption and long lifetime.

Usage: The LED flexstripe are perfect for applications like

- Event lighting
- Room lighting
- In-Mood applications
- Architectural lighting
- Savety lighting
- and much more

Technic: The flexstripe has extra wide copper circuits to ensure best heat consumption of the used components. The smal width of only 8mm makes it perfect for use in furnitures and shelf systems.

Cost effective: This LED stripes fit exactly into your application because itthey can be shortened every 5cm (3 LEDs). The soldering pads are replicated on every 5cm piece, too.

Flexibility: The high quality 3M adhesive tape gives the stripes enough hold on any surface. The minimum bounding diameter of 2cm provides a wide range of possible mountings.

Technical data:

- Length: 500cm
- Width: 0,8cm
- Height: 0,2cm
- LEDs: 300x
- LED housing: PLCC2
- Forward current @ 5m: 1,4A
- Min. bounding diameter: 2cm
- Shortening: every 5cm (3 LEDs)
- Soldering pads on every part
- Mounting: 3M adhesive tape



LED Flexstripe SMD (5m Reel) (warm white)



Part Number: LT-1385

Viewing Angle: 120°

Emitting Color: warm white

Lumen typ.: 1100 mcd

Kelvin typ.: 3300 mcd

V typ.: 12 V

New LED flex stripe with high quality PLCC2 SMD LEDs and extrem good cost/performance ratio. The LEDs main advantages are low power consumption and long lifetime.

Usage: The LED flexstripe are perfect for applications like

- Event lighting
- Room lighting
- In-Mood applications
- Architectural lighting
- Savety lighting
- and much more

Technic: The flexstripe has extra wide copper circuits to ensure best heat consumption of the used components. The smal width of only 8mm makes it perfect for use in furnitures and shelf systems.

Cost effective: This LED stripes fit exactly into your application because itthey can be shortened every 5cm (3 LEDs). The soldering pads are replicated on every 5cm piece, too.

Flexibility: The high quality 3M adhesive tape gives the stripes enough hold on any surface. The minimum bounding diameter of 2cm provides a wide range of possible mountings.

Technical data:

- Length: 500cm
- Width: 0,8cm
- Height: 0,2cm
- LEDs: 300x
- LED housing: PLCC2
- Forward current @ 5m: 1,4A
- Min. bounding diameter: 2cm
- Shortening: every 5cm (3 LEDs)
- Soldering pads on every part
- Mounting: 3M adhesive tape



LED Flexstripe SMD (5m Reel) (red / green / blue)



Part Number: LT-1386

Viewing Angle: 120°

Emitting Color: red / green / blue

Lumen typ.: 800 mcd

V typ.: 12 V

New RGB LED flex stripe with high quality PLCC2 SMD LEDs and extrem good cost/performance ratio. The LEDs main advantages are low power consumption and long lifetime.

Usage: The LED flexstripe are perfect for applications like

- Event lighting
- Room lighting
- In-Mood applications
- Architectural lighting
- Savety lighting
- and much more

Technic: The flexstripe has extra wide copper circuits to ensure best heat consumption of the used components. The smal wideth of only 8mm makes it perfect for use in furnitures and shelf systems.

Cost effective: This LED stripes fit exactly into your application because itthey can be shortened every 5cm (3 LEDs). The soldering pads are replicated on every 10cm piece, too.

Flexibility: The high quality 3M adhesive tape gives the stripes enough hold on any surface. The minimum bounding diameter of 2cm provides a wide range of possible mountings.

Technical data:

- Length: 500cm
- Width: 1,2cm
- Height: 0,2cm
- LEDs: 150x
- LED housing: PLCC2
- Forward current @ 5m: 1,9A
- Connection: Common anode
- Min. bounding diameter: 2cm
- Shortening: every 10cm (3 LEDs)
- Soldering pads on every part
- Mounting: 3M adhesive tape



LED Flexstripe SMD (5m Reel, waterproof) (white)



Part Number: LT-1387

Viewing Angle: 120°

Emitting Color: white

Lumen typ.: 950 mcd

Kelvin typ.: 6500 mcd

V typ.: 12 V

New waterproof LED flex stripe with high quality PLCC2 SMD LEDs and extrem good cost/performance ratio. The LEDs main advantages are low power consumption and long lifetime.

Usage: The LED flexstripe are perfect for applications like

- Event lighting
- Room lighting
- In-Mood applications
- Architectural lighting
- Savety lighting
- and much more

Technic: The flexstripe has extra wide copper circuits to ensure best heat consumption of the used components. The smal width of only 8mm makes it perfect for use in furnitures and shelf systems.

Cost effective: This LED stripes fit exactly into your application because itthey can be shortened every 5cm (3 LEDs). The soldering pads are replicated on every 5cm piece, too.

Flexibility: The high quality 3M adhesive tape gives the stripes enough hold on any surface. The minimum bounding diameter of 2cm provides a wide range of possible mountings.

Technical data:

- Length: 500cm
- Width: 1,0cm
- Height: 0,4cm
- LEDs: 300x
- LED housing: PLCC2
- Forward current @ 5m: 1,4A
- Waterproof (IP65)
- Min. bounding diameter: 2cm
- Shortening: every 5cm (3 LEDs)
- Soldering pads on every part
- Mounting: 3M adhesive tape



LED Flexstripe SMD (5m Reel, waterproof) (warm white)



Part Number: LT-1425

Viewing Angle: 120°

Emitting Color: warm white

Lumen typ.: 1050 mcd

Kelvin typ.: 3300 mcd

V typ.: 12 V

New waterproof LED flex stripe with high quality PLCC2 SMD LEDs and extrem good cost/performance ratio. The LEDs main advantages are low power consumption and long lifetime.

Usage: The LED flexstripe are perfect for applications like

- Event lighting
- Room lighting
- In-Mood applications
- Architectural lighting
- Savety lighting
- and much more

Technic: The flexstripe has extra wide copper circuits to ensure best heat consumption of the used components. The smal width of only 8mm makes it perfect for use in furnitures and shelf systems.

Cost effective: This LED stripes fit exactly into your application because itthey can be shortened every 5cm (3 LEDs). The soldering pads are replicated on every 5cm piece, too.

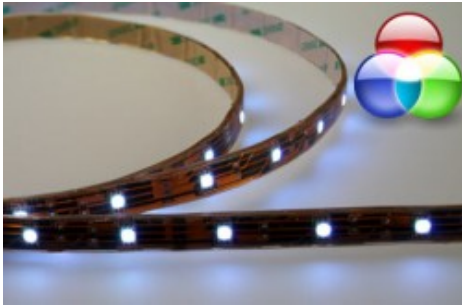
Flexibility: The high quality 3M adhesive tape gives the stripes enough hold on any surface. The minimum bounding diameter of 2cm provides a wide range of possible mountings.

Technical data:

- Length: 500cm
- Width: 1,0cm
- Height: 0,4cm
- LEDs: 300x
- LED housing: PLCC2
- Forward current @ 5m: 1,4A
- Waterproof (IP65)
- Min. bounding diameter: 2cm
- Shortening: every 5cm (3 LEDs)
- Soldering pads on every part
- Mounting: 3M adhesive tape



LED Flexstripe SMD (5m Reel, waterproof) (red / green / blue)



New waterproofed RGB LED flex stripe with high quality PLCC2 SMD LEDs and extrem good cost/performance ratio. The LEDs main advantages are low power consumption and long lifetime.

Usage: The LED flexstripe are perfect for applications like

- Event lighting
- Room lighting
- In-Mood applications
- Architectural lighting
- Savety lighting
- and much more

Technic: The flexstripe has extra wide copper circuits to ensure best heat consumption of the used components. The smal width of only 8mm makes it perfect for use in furnitures and shelf systems.

Cost effective: This LED stripes fit exactly into your application because itthey can be shortened every 5cm (3 LEDs). The soldering pads are replicated on every 10cm piece, too.

Flexibility: The high quality 3M adhesive tape gives the stripes enough hold on any surface. The minimum bounding diameter of 2cm provides a wide range of possible mountings.

Technical data:

- Length: 500cm
- Width: 1,4cm
- Height: 0,3cm
- LEDs: 150x
- LED housing: PLCC2
- Forward current @ 5m: 1,9A
- Connection: Common anode
- waterproof (IP65)
- Min. bounding diameter: 2cm
- Shortening: every 10cm (3 LEDs)
- Soldering pads on every part
- Mounting: 3M adhesive tape

Part Number: LT-1458

Viewing Angle: 120°

Emitting Color: red / green / blue

Lumen typ.: 750 mcd

V typ.: 12 V



RGB Set (flexstripe + controller + power supply) (red / green / blue)



Save a lot of money with the LED-TECH.de All-In-One sets. This set contains:

- 1x 5m Reel RGB flexstripe (LT-1386)
- 1x MultiLine RGB controller (LT-1001)
- 1x MultiLine Remote Control (LT-1002)
- 1x High quality Meanwell power supply (LT-0721)

New RGB LED flex stripe with high quality PLCC2 SMD LEDs and extrem good cost/performance ratio. The LEDs main advantages are low power consumption and long lifetime.

Usage: The LED flexstripe are perfect for applications like

- Event lighting
- Room lighting
- In-Mood applications
- Architectural lighting
- Savety lighting
- and much more

Technic: The flexstripe has extra wide copper circuits to ensure best heat consumption of the used components. The smal width of only 8mm makes it perfect for use in furnitures and shelf systems.

Cost effective: This LED stripes fit exactly into your application because itthey can be shortened every 5cm (3 LEDs). The soldering pads are replicated on every 10cm piece, too.

Flexibility: The high quality 3M adhesive tape gives the stripes enough hold on any surface. The minimum bounding diameter of 2cm provides a wide range of possible mountings.

Technical data:

- Length: 500cm
- Width: 1,2cm
- Height: 0,2cm
- LEDs: 150x
- LED housing: PLCC2
- Forward current @ 5m: 1,9A
- Connection: Common anode
- Min. bounding diameter: 2cm
- Shortening: every 10cm (3 LEDs)
- Soldering pads on every part

Part Number: LT-1464

Viewing Angle: 120°

Emitting Color: red / green / blue

Lumen typ.: 800 mcd

V typ.: 12 V



LED Flexstripe SMD (5m Reel) (red)



Part Number: LT-1524
 Viewing Angle: 120°
 Emitting Color: red
 Nanometer: 630
 Lumen typ.: 280 mcd
 mA typ.: 1400 mA
 V typ.: 12 V

New LED flex stripe with high quality PLCC2 SMD LEDs and extrem good cost/performance ratio. The LEDs main advantages are low power consumption and long lifetime.

Usage: The LED flexstripe are perfect for applications like

- Event lighting
- Room lighting
- In-Mood applications
- Architectural lighting
- Savety lighting
- and much more

Technic: The flexstripe has extra wide copper circuits to ensure best heat consumption of the used components. The smal width of only 8mm makes it perfect for use in furnitures and shelf systems.

Cost effective: This LED stripes fit exactly into your application because itthey can be shortened every 5cm (3 LEDs). The soldering pads are replicated on every 5cm piece, too.

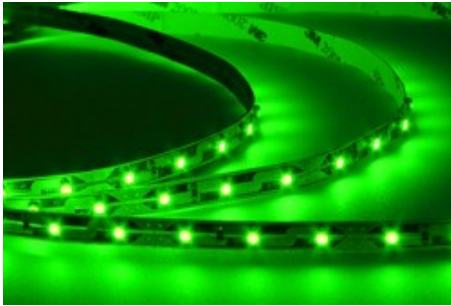
Flexibility: The high quality 3M adhesive tape gives the stripes enough hold on any surface. The minimum bounding diameter of 2cm provides a wide range of possible mountings.

Technical data:

- Length: 500cm
- Width: 0,8cm
- Height: 0,2cm
- LEDs: 300x
- LED housing: PLCC2
- Forward current @ 5m: 1,4A
- Min. bounding diameter: 2cm
- Shortening: every 5cm (3 LEDs)
- Soldering pads on every part
- Mounting: 3M adhesive tape



LED Flexstripe SMD (5m Reel) (green)



Part Number: LT-1525
 Viewing Angle: 120°
 Emitting Color: green
 Nanometer: 520
 Lumen typ.: 820 mcd
 mA typ.: 1200 mA
 V typ.: 12 V

New LED flex stripe with high quality PLCC2 SMD LEDs and extrem good cost/performance ratio. The LEDs main advantages are low power consumption and long lifetime.

Usage: The LED flexstripe are perfect for applications like

- Event lighting
- Room lighting
- In-Mood applications
- Architectural lighting
- Savety lighting
- and much more

Technic: The flexstripe has extra wide copper circuits to ensure best heat consumption of the used components. The smal width of only 8mm makes it perfect for use in furnitures and shelf systems.

Cost effective: This LED stripes fit exactly into your application because itthey can be shortened every 5cm (3 LEDs). The soldering pads are replicated on every 5cm piece, too.

Flexibility: The high quality 3M adhesive tape gives the stripes enough hold on any surface. The minimum bounding diameter of 2cm provides a wide range of possible mountings.

Technical data:

- Length: 500cm
- Width: 0,8cm
- Height: 0,2cm
- LEDs: 300x
- LED housing: PLCC2
- Forward current @ 5m: 1,2A
- Min. bounding diameter: 2cm
- Shortening: every 5cm (3 LEDs)
- Soldering pads on every part
- Mounting: 3M adhesive tape



LED Flexstripe SMD (5m Reel) (blue)



Part Number: LT-1526
 Viewing Angle: 120°
 Emitting Color: blue
 Nanometer: 467
 Lumen typ.: 260 mcd
 mA typ.: 1200 mA
 V typ.: 12 V

New LED flex stripe with high quality PLCC2 SMD LEDs and extrem good cost/performance ratio. The LEDs main advantages are low power consumption and long lifetime.

Usage: The LED flexstripe are perfect for applications like

- Event lighting
- Room lighting
- In-Mood applications
- Architectural lighting
- Savety lighting
- and much more

Technic: The flexstripe has extra wide copper circuits to ensure best heat consumption of the used components. The smal width of only 8mm makes it perfect for use in furnitures and shelf systems.

Cost effective: This LED stripes fit exactly into your application because itthey can be shortened every 5cm (3 LEDs). The soldering pads are replicated on every 5cm piece, too.

Flexibility: The high quality 3M adhesive tape gives the stripes enough hold on any surface. The minimum bounding diameter of 2cm provides a wide range of possible mountings.

Technical data:

- Length: 500cm
- Width: 0,8cm
- Height: 0,2cm
- LEDs: 300x
- LED housing: PLCC2
- Forward current @ 5m: 1,2A
- Min. bounding diameter: 2cm
- Shortening: every 5cm (3 LEDs)
- Soldering pads on every part
- Mounting: 3M adhesive tape



LED Flexstripe SMD (5m Reel) (yellow)



Part Number: LT-1527
 Viewing Angle: 120°
 Emitting Color: yellow
 Nanometer: 588
 Lumen typ.: 280 mcd
 mA typ.: 1400 mA
 V typ.: 12 V

New LED flex stripe with high quality PLCC2 SMD LEDs and extrem good cost/performance ratio. The LEDs main advantages are low power consumption and long lifetime.

Usage: The LED flexstripe are perfect for applications like

- Event lighting
- Room lighting
- In-Mood applications
- Architectural lighting
- Savety lighting
- and much more

Technic: The flexstripe has extra wide copper circuits to ensure best heat consumption of the used components. The smal width of only 8mm makes it perfect for use in furnitures and shelf systems.

Cost effective: This LED stripes fit exactly into your application because itthey can be shortened every 5cm (3 LEDs). The soldering pads are replicated on every 5cm piece, too.

Flexibility: The high quality 3M adhesive tape gives the stripes enough hold on any surface. The minimum bounding diameter of 2cm provides a wide range of possible mountings.

Technical data:

- Length: 500cm
- Width: 0,8cm
- Height: 0,2cm
- LEDs: 300x
- LED housing: PLCC2
- Forward current @ 5m: 1,4A
- Min. bounding diameter: 2cm
- Shortening: every 5cm (3 LEDs)
- Soldering pads on every part
- Mounting: 3M adhesive tape



Power Supply MeanWell 12V / 2.1A / 25W



Part Number: LT-1529

Housing Color: alu-silver

mA typ.: 2100 mA

V typ.: 12 V

The powerful compact power supply!

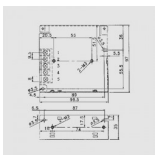
Ideal for flexstrips!

High quality switching power supply with integrated noise filter. Closed versions with screw clamps and very low periodic and random deviation. Overload protection, auto recovery and short circuit protection are (of course) integrated, too.

This power supply is able to run hundreds of through hole LEDs. Because of the constant high power output big CCFL applications are no problem anymore, too. You can run about a dozen of cold cathodes. If you have any questions regarding your own application just talk to our Support.

Technical Data:

- Type: Switching Power Supply
- Input: 85-264 VAC
- Input: 120-370 VDC
- Inrush Current: 25 A
- Output: 12 VDC
- Current: 2.1 A
- Overload Protection: yes
- Short Circuit Protection: yes
- Efficiency: >76 %
- Tolerance: +/- 1%
- Ripple: 100 mV
- Length: 99 mm
- Width: 97 mm
- Height: 36 mm
- Connection: screw clamps



LED Flexstripe MidPower SMD Ultrabright (5m Reel) (warm white)



Part Number: LT-1613

Viewing Angle: 120°

Emitting Color: warm white

Lumen typ.: 2500 mcd

Kelvin typ.: 3300 mcd

mA typ.: 1500 mA

V typ.: 24 V

New version: 600 LEDs & maximum brightness!

New 24V ultrabright LED flex stripe with 600x high quality PLCC2 SMD LEDs and extrem good cost/performance ratio. The LEDs main advantages are low power consumption and long lifetime.

Usage: The LED flexstripe are perfect for applications like

- Event lighting
- Room lighting
- In-Mood applications
- Architectural lighting
- Savety lighting
- and much more

Technic: The new ultrabright flexstripes with 600x LEDs have double LED density than common flexstripes which makes them even more homogeneous and brighter. They have extra wide copper circuits to ensure best heat consumption of the used components. The smal wideth of only 8mm makes it perfect for use in furnitures and shelf systems.

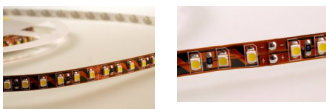
Cost effective: This LED stripes fit exactly into your application because itthey can be shortened every 5cm (6 LEDs). The soldering pads are replicated on every 5cm piece, too.

Flexibility: The high quality 3M adhesive tape gives the stripes enough hold on any surface. The minimum bounding diameter of 2cm provides a wide range of possible mountings.

Technical data:

- Length: 500cm
- Width: 1,0cm
- Height: 0,2cm
- LEDs: 600x
- LED housing: PLCC2
- Forward current @ 5m: 1,5A
- Min. bounding diameter: 2cm
- Shortening: every 5cm (6 LEDs)
- Soldering pads on every part
- Mounting: 3M adhesive tape

Technical remark:



We recommend to split and reconnect these flexstrips every 2.5m for best possible heat management and to enlarge LED lifetimes!

LED Flexstripe SMD Ultrabright (5m Reel) (red / green / blue)



Part Number: LT-1614

Viewing Angle: 120°

Emitting Color: red / green / blue

Nanometer: R:630 G:515 B:460

Lumen typ.: 1600 mcd

mA typ.: 3500 mA

V typ.: 12 V

New version: 600 LEDs & maximum brightness!

New 12V ultrabright LED flex stripe with 300x high quality PLCC6 SMD LEDs and extrem good cost/performance ratio. The LEDs main advantages are low power consumption and long lifetime.

Usage: The LED flexstripe are perfect for applications like

- Event lighting
- Room lighting
- In-Mood applications
- Architectural lighting
- Savety lighting
- and much more

Technic: The new ultrabright flexstripes with 300x LEDs have double LED density than common flexstripes which makes them even more homogeneous and brighter. They have extra wide copper circuits to ensure best heat consumption of the used components. The smal wideth of only 8mm makes it perfect for use in furnitures and shelf systems.

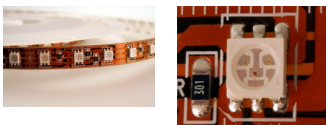
Cost effective: This LED stripes fit exactly into your application because itthey can be shortened every 5cm (3 LEDs). The soldering pads are replicated on every 5cm piece, too.

Flexibility: The high quality 3M adhesive tape gives the stripes enough hold on any surface. The minimum bounding diameter of 2cm provides a wide range of possible mountings.

Technical data:

- Length: 500cm
- Width: 1,2cm
- Height: 0,25cm
- LEDs: 300x
- LED housing: PLCC6
- Forward current @ 5m: 3,5A
- Min. bounding diameter: 2cm
- Shortening: every 5cm (3 LEDs)
- Soldering pads on every part
- Mounting: 3M adhesive tape

Technical remark:



We recommend to split and reconnect these flexstrips every 2.5m for best possible heat management and to enlarge LED lifetimes!

LED Flexstripe SMD Ultrabright (5m Reel) (warm white)



Part Number: LT-1615

Viewing Angle: 120°

Emitting Color: warm white

Lumen typ.: 3500 mcd

Kelvin typ.: 3200 mcd

mA typ.: 3500 mA

V typ.: 12 V

New version: 600 LEDs & maximum brightness!

New 12V ultrabright LED flex stripe with 300x high quality PLCC6 SMD LEDs and extrem good cost/performance ratio. The LEDs main advantages are low power consumption and long lifetime.

Usage: The LED flexstripe are perfect for applications like

- Event lighting
- Room lighting
- In-Mood applications
- Architectural lighting
- Savety lighting
- and much more

Technic: The new ultrabright flexstripes with 300x LEDs have double LED density than common flexstripes which makes them even more homogeneous and brighter. They have extra wide copper circuits to ensure best heat consumption of the used components. The smal width of only 8mm makes it perfect for use in furnitures and shelf systems.

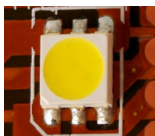
Cost effective: This LED stripes fit exactly into your application because itthey can be shortened every 5cm (3 LEDs). The soldering pads are replicated on every 5cm piece, too.

Flexibility: The high quality 3M adhesive tape gives the stripes enough hold on any surface. The minimum bounding diameter of 2cm provides a wide range of possible mountings.

Technical data:

- Length: 500cm
- Width: 1,2cm
- Height: 0,25cm
- LEDs: 300x
- LED housing: PLCC6
- Forward current @ 5m: 3,5A
- Min. bounding diameter: 2cm
- Shortening: every 5cm (3 LEDs)
- Soldering pads on every part
- Mounting: 3M adhesive tape

Technical remark:



We recommend to split and reconnect these flexstrips every 2.5m for best possible heat management and to enlarge LED lifetimes!

Imprint



LED-TECH.DE optoelectronics Showroom

Director: Stefan Lenz

Am Schürmannshütt 38B

D-47441 Moers

Phone: (+49) 2841 / 97 91 7-0

Fax: (+49) 2841 / 97 91 7-29



Further we want to point at pictures, graphics and descriptions as well as the pagelayout itself which are all subject to copyright. Every offence will be prosecuted.

All mentioned prices are to be understood as gross prices including the value added tax (TAV). All offers are subject to prior sales and without commitment. Delivery times are to be understood from date of receipt of order. Mistakes and changes in prices are always reserved.



