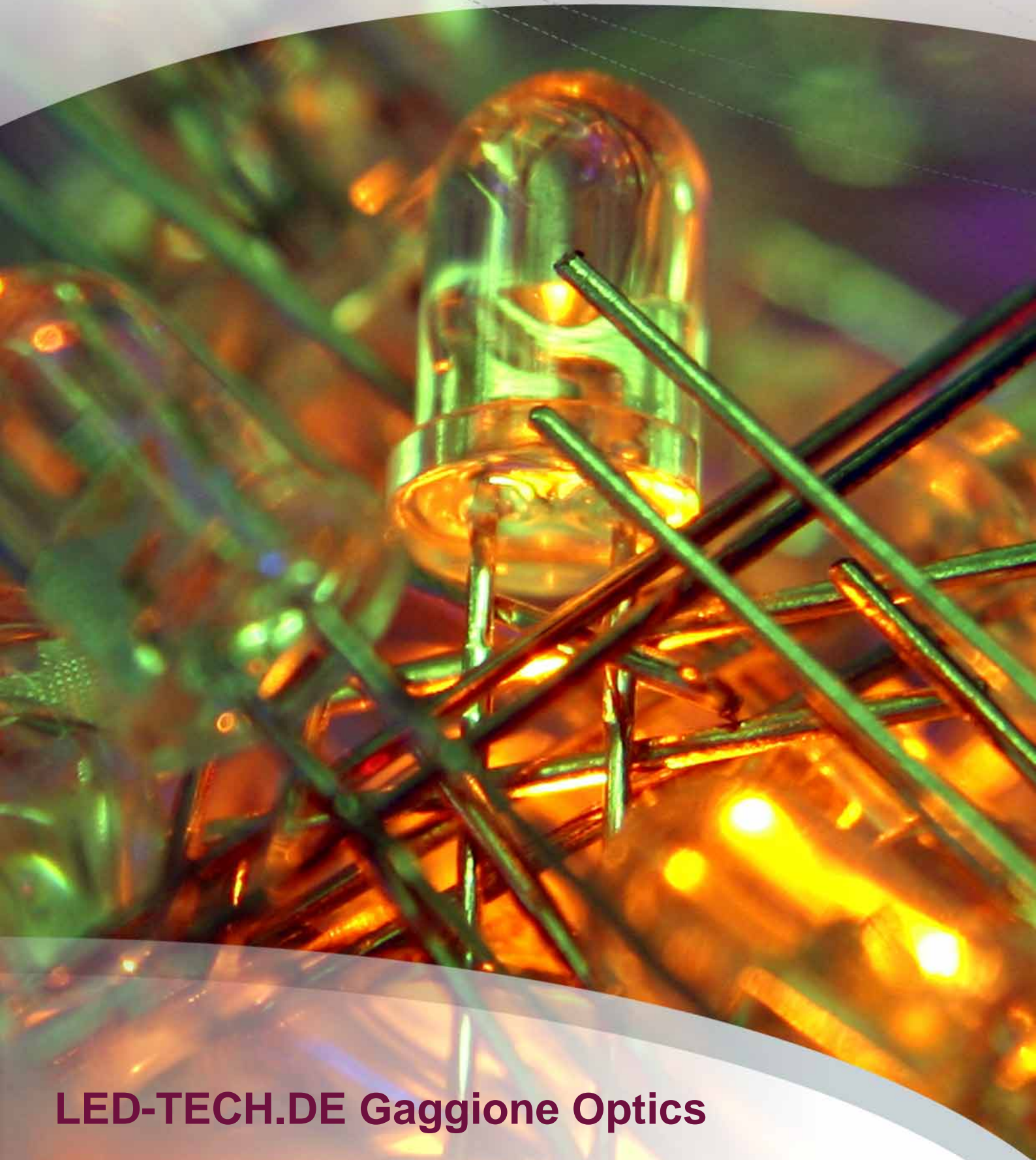


LED-TECH.DE

OPTOELECTRONICS



LED-TECH.DE Gaggione Optics

Gaggione Mobdar extra narrow 6°



The Mobdar lens is specially designed for the market of bicycle lamps and torches. This product belongs to the most popular lens on the led market and is the first choice for professionals. The lens score with extra narrow beam and very high quality.

Typical applications are:

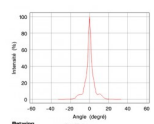
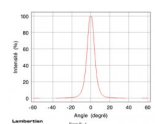
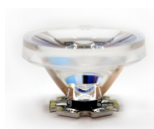
Bicycle light
Torches
Diving lamps
Architecture lightning
general illumination with range distance
We advice the Mobdar with high power LEDs from Luxeon (I, III, V, K2) and Seoul.

Part Number: LT-1211

Diameter: 35,5mm

Viewing Angle: 6°

Housing Color: transparent



Gaggione LLC19N Optic 45mm (XM-L, MC-E)



Part Number: LT-1812

Diameter: 45

Viewing Angle: 5.1-5.5°

Housing Color: clear

Gaggione is a premium manufacturer of secondary optics and stands for accuracy and high end quality of their collimators. Professional users appreciate the technical as well as the optical advantages of gaggione optics.

LED Half width°

CREE MC-E Color

5.5CREE MC-E White

5.1XM-L Easy White

5.1

LED-TECH.DE is an official Gaggione distributor. You can acquire all Lednlight products from us. If you are looking for optics that are not listed in our online product catalog please do not hesitate to contact our sales team. Thank you very much.



Gaggione LLC49R Optic 45mm (XM-L, XP-G, XB-D, OSLO...)



Part Number: LT-1813

Diameter: 45

Viewing Angle: 1.7-4°

Housing Color: clear

Gaggione is a premium manufacturer of secondary optics and stands for accuracy and high end quality of their collimators. Professional users appreciate the technical as well as the optical advantages of gaggione optics.

LED Half Width°

CREE XM-L

3.7CREE XM-L High Voltage

4CREE XP-G

2.7CREE XB-D

2.5CREE XT-E High Voltage

3

CREE XP-E

1.8

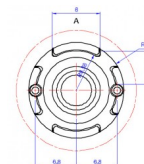
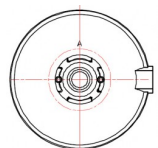
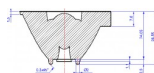
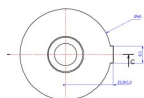
Luxeon Rebel ES

3

Osram Oslon 150°

1.7

LED-TECH.DE is an official Gaggione distributor. You can acquire all Lednlight products from us. If you are looking for optics that are not listed in our online product catalog please do not hesitate to contact our sales team. Thank you very much.



Gaggione LLC19M Optic 45mm (MC-E)



Gaggione is a premium manufacturer of secondary optics and stands for accuracy and high end quality of their collimators. Professional users appreciate the technical as well as the optical advantages of gaggione optics.

LED Half width°
CREE MC-E Color
10.3

Part Number: LT-1815
Diameter: 45
Viewing Angle: 10.3°
Housing Color: clear

LED-TECH.DE is an official Gaggione distributor. You can acquire all Lednlight products from us. If you are looking for optics that are not listed in our online product catalog please do not hesitate to contact our sales team. Thank you very much.



Gaggione LLC19E Optic 45mm (MC-E)



Gaggione is a premium manufacturer of secondary optics and stands for accuracy and high end quality of their collimators. Professional users appreciate the technical as well as the optical advantages of gaggione optics.

LED Half width°
CREE MC-E Color
5.2 x 18.8

Part Number: LT-1816

Diameter: 45

Viewing Angle: 5.2 x 18.8°

Housing Color: clear

LED-TECH.DE is an official Gaggione distributor. You can acquire all Lednlight products from us. If you are looking for optics that are not listed in our online product catalog please do not hesitate to contact our sales team. Thank you very much.



Imprint



LED-TECH.DE optoelectronics Showroom

Director: Stefan Lenz

Am Schürmannshütt 38B

D-47441 Moers

Phone: (+49) 2841 / 97 91 7-0

Fax: (+49) 2841 / 97 91 7-29

Further we want to point at pictures, graphics and descriptions as well as the pagelayout itself which are all subject to copyright. Every offence will be prosecuted.

All mentioned prices are to be understood as gross prices including the value added tax (TAV). All offers are subject to prior sales and without commitment. Delivery times are to be understood from date of receipt of order. Mistakes and changes in prices are always reserved.



