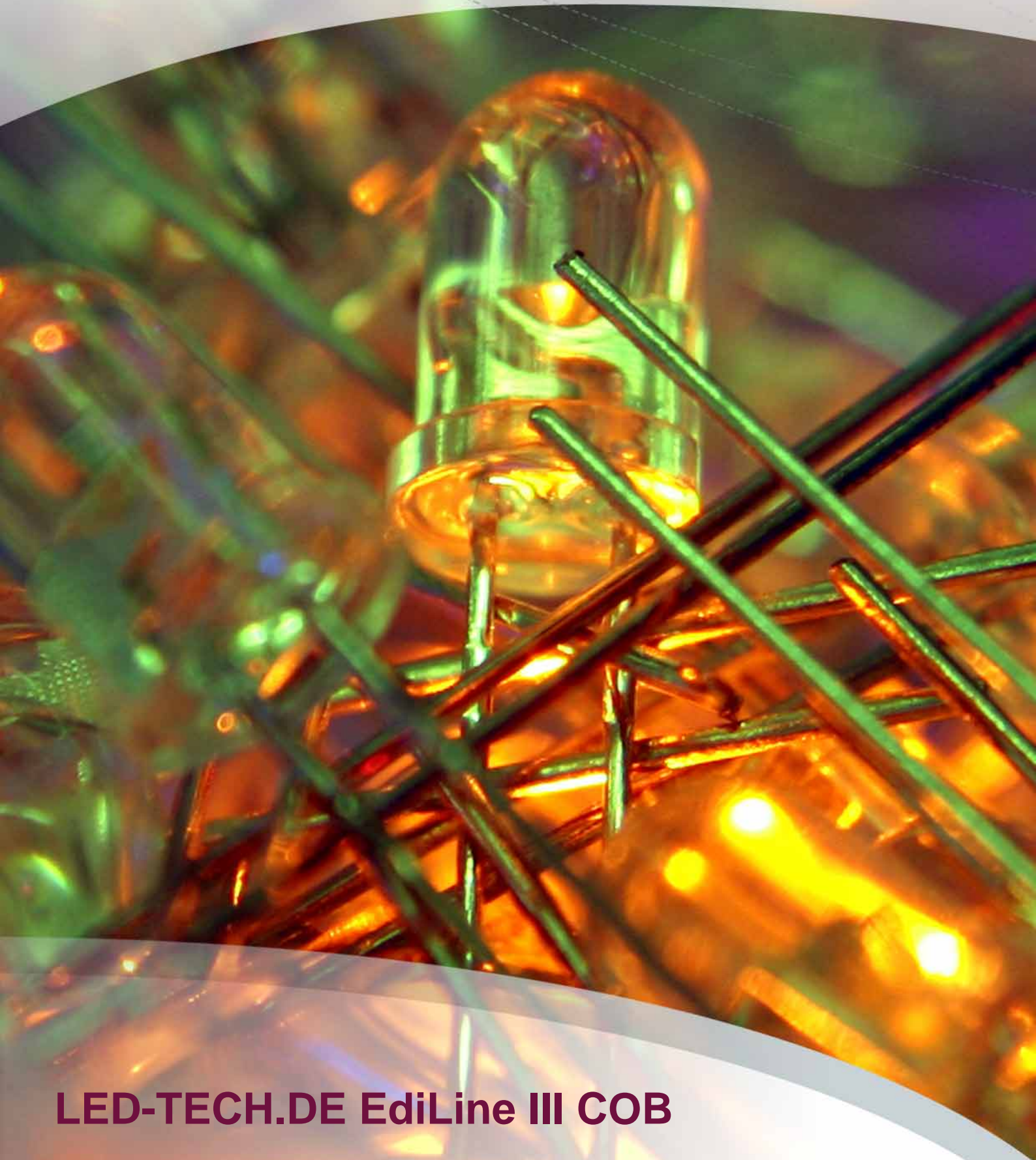


LED-TECH.DE

OPTOELECTRONICS



LED-TECH.DE EdiLine III COB

Edison EdiLine III 1W COB modul (white)



Part Number: LT-1634

Viewing Angle: 120/140°

Emitting Color: white

Lumen typ.: 100 mcd

Kelvin typ.: 6000 mcd

V typ.: 3,4 V

Edison EdiLine III

The ultraflat EdiLine series from Edison comes up in next generation. Version III replaces the former version II with new and better technical parameters. Very interesting is the low forward voltage @ 350mA. This allows a similar simple handling like high power LEDs.

The products are currently that new that even the manufacturer does not provide datasheet material. We will link the datasheets as soon as they are available. Until that happens please rely on the below mentioned values of the LED-TECH.DE laboratories:

QC measurement:

Typical @ 350 mA

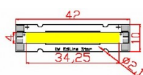
Voltage: 3,1 V

Kelvin: 5504 K

Lumen: 109,4 lm

CRI: 72,3

Please always ensure a duration and good cooling when working with high power LED or COB components. Thanks



Edison EdiLine III 1W COB modul (daylight white)



Edison EdiLine III

The ultraflat EdiLine series from Edison comes up in next generation. Version III replaces the former version II with new and better technical parameters. Very interesting is the low forward voltage @ 350mA. This allows a similar simple handling like high power LEDs.

QC measurement:

Typical @ 350 mA

Voltage: 3,22 V

Kelvin: 3900 K

Lumen: 93,28 lm

CRI: 78,8

Please always ensure a durating and good cooling when working with high power LED or COB components. Thanks

Part Number: LT-1635

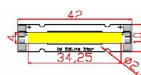
Viewing Angle: 120/140°

Emitting Color: daylight white

Lumen typ.: 100 mcd

Kelvin typ.: 4000 mcd

V typ.: 3,4 V



Edison EdiLine III 1W COB modul (warm white)



Edison EdiLine III

The ultraflat EdiLine series from Edison comes up in next generation. Version III replaces the former version II with new and better technical parameters. Very interesting is the low forward voltage @ 350mA. This allows a similar simple handling like high power LEDs.

QC measurement:

Typical @ 350 mA

Voltage: 3,3 V

Kelvin: 2705 K

Lumen: 79,96 lm

CRI: 80,9

Please always ensure a durating and good cooling when working with high power LED or COB components. Thanks

Part Number: LT-1636

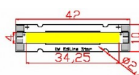
Viewing Angle: 120/140°

Emitting Color: warm white

Lumen typ.: 70 mcd

Kelvin typ.: 3000 mcd

V typ.: 3,4 V



Edison EdiLine III 3,5W COB modul (white)



Part Number: LT-1637
Viewing Angle: 120/140°
Emitting Color: white
Lumen typ.: 330 mcd
Kelvin typ.: 6000 mcd
V typ.: 10,2 V

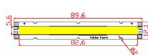
Edison EdiLine III

The ultraflat EdiLine series from Edison comes up in next generation. Version III replaces the former version II with new and better technical parameters.

QC measurement:

Typical @ 350 mA
Voltage: 10 V
Kelvin: 5300 K
Lumen: 318 lm
CRI: 72,5

Please always ensure a durating and good cooling when working with high power LED or COB components. Thanks



Edison EdiLine III 3,5W COB modul (daylight white)



Edison EdiLine III

The ultraflat EdiLine series from Edison comes up in next generation. Version III replaces the former version II with new and better technical parameters.

QC measurement:

Typical @ 350 mA

Voltage: 10,3 V

Kelvin: 3863 K

Lumen: 281,3 lm

CRI: 79,3

Please always ensure a durating and good cooling when working with high power LED or COB components. Thanks

Part Number: LT-1638

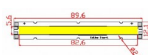
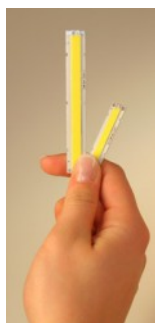
Viewing Angle: 120/140°

Emitting Color: daylight white

Lumen typ.: 260 mcd

Kelvin typ.: 4000 mcd

V typ.: 10,2 V



Edison EdiLine III 3,5W COB modul (warm white)



Part Number: LT-1639
 Viewing Angle: 120/140°
 Emitting Color: warm white
 Lumen typ.: 230 mcd
 Kelvin typ.: 3000 mcd
 V typ.: 10,2 V

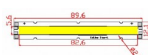
Edison EdiLine III

The ultraflat EdiLine series from Edison comes up in next generation. Version III replaces the former version II with new and better technical parameters.

QC measurement:

Typical @ 350 mA
 Voltage: 10,1 V
 Kelvin: 2727 K
 Lumen: 240,2 lm
 CRI: 81,3

Please always ensure a durating and good cooling when working with high power LED or COB components. Thanks



Imprint



LED-TECH.DE optoelectronics Showroom

Director: Stefan Lenz

Am Schürmannshütt 38B

D-47441 Moers

Phone: (+49) 2841 / 97 91 7-0

Fax: (+49) 2841 / 97 91 7-29

Further we want to point at pictures, graphics and descriptions as well as the pagelayout itself which are all subject to copyright. Every offence will be prosecuted.

All mentioned prices are to be understood as gross prices including the value added tax (TAV). All offers are subject to prior sales and without commitment. Delivery times are to be understood from date of receipt of order. Mistakes and changes in prices are always reserved.



