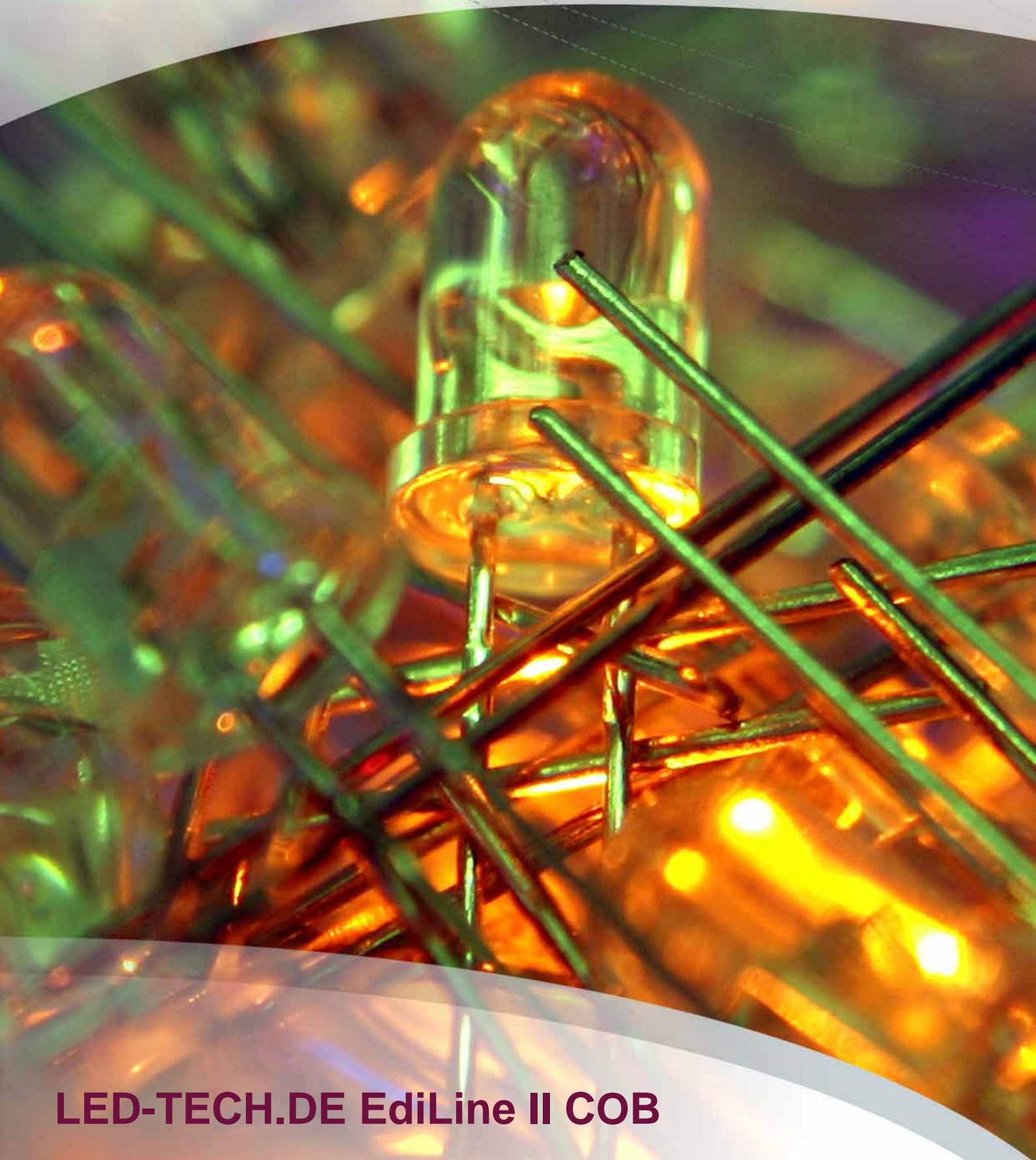


LED-TECH.DE

OPTOELECTRONICS



LED-TECH.DE EdiLine II COB

PowerLine SLIM Constant Current Power Supply for EDISON (500mA, 30V)



Part Number: LT-1484

Housing Color: alu-silver

mA typ.: 500 mA

V max.: 30 V

500mA version especially for EDISON EdiLine modules!

New Low-Drop SLIM Version on alu PCB!

The linear PowerLine constant current power supplies are characterized by higher operating ranges and actually PWM capability (Pulse-Width Modulation). If you do not know exactly what the sense of those power supplies is please read the following lines:

Even high power LED application can only guaranty 100% of the LEDs lifetime if the illuminants get a constant current supply. You have the possibility to use a constant current power supply with a step-down converter (product example) that come in a very small housing but is not able to be used in a RGB application.

The other possibility is to use a linear constant current power supply in PCB version. We placed all components on a high quality aluminium PCB which can be integrated directly in other applications or can be mounted directly on metal surfaces to guaranty a good heat conductance in during use.

Alternative: The PowerLine constant current power supplies are available with cooling elements, too.

Connecting and quality are on highest levels. Connecting is very easy too because the 4 big soldering pads are clearly defined by inscriptions. Please read below the further features of this powerful little helper.

Technical data:

- Drop voltage: 1V
- Input: 30V DC (max.)
- Output: 500mA constant
- PCB electrical isolated!
- Input short circuit protection
- Output short circuit protection
- Autom. current reduction if too much heat!
- Operating Temp: -50°C over ambient temp.
- Max. input voltage: 7V over LED voltage
- 2 mounting eyes
- Dimensions (W/H/D): 50 x 7 x 15 mm

If you have any questions please send us an email.

BUCK Constant Current Power Supply for COB (500mA, 30V)



Part Number: LT-1551

Housing Color: black

mA typ.: 500 mA

V max.: 30 V

500mA version especially for EDISON Ediline modules!

The BUCK constant current power supplies also known as step down converters are characterized by high operating ranges that are not subject to the number of connected illuminants (LEDs). Example: You can run a BUCK driver with 30V but with only one LEDs on the output side. The BUCK adjusts the voltage very efficient and avoid overheating by autom. shut down to save the components. This is why we are able to offer this product for low prices because we can use FR4 PCB material instead of aluminium.

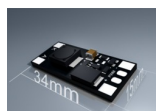
A further main advantage is the PWM capability (Pulse-Width Modulation). The BUCK is compatible to controllers using common anode and has to be connected parallel to the RGB controller. The +/- outputs of the controller provide the PWM signal for separate inputs on the BUCK PCB. This is a very easy way to run even big applications most efficiently and cost saving. The above linked diagram shows the connection in detail.

Conversion and quality are on highest levels. The very slim product style of only 15mm makes it perfect to fit in most LED profiles/tubes, torch housing and many more. Connecting is very easy too because the 4 big soldering pads are clearly defined by inscriptions. Please read below the further features of this powerful little helper.

Technical data:

- Input: 7-30V DC (max.)
- Output: 500mA constant
- PCB isolated by protective laquer
- Can be glued to other surfaces
- Input short circuit protection
- Output short circuit protection
- Autom. shut down to avoid overheating
- Operating Temp: -50°C over ambient temp.

If you have any questions please contact our support.



Imprint



LED-TECH.DE optoelectronics Showroom

Director: Stefan Lenz

Am Schürmannshütt 38B

D-47441 Moers

Phone: (+49) 2841 / 97 91 7-0

Fax: (+49) 2841 / 97 91 7-29

Further we want to point at pictures, graphics and descriptions as well as the pagelayout itself which are all subject to copyright. Every offence will be prosecuted.

All mentioned prices are to be understood as gross prices including the value added tax (TAV). All offers are subject to prior sales and without commitment. Delivery times are to be understood from date of receipt of order. Mistakes and changes in prices are always reserved.



