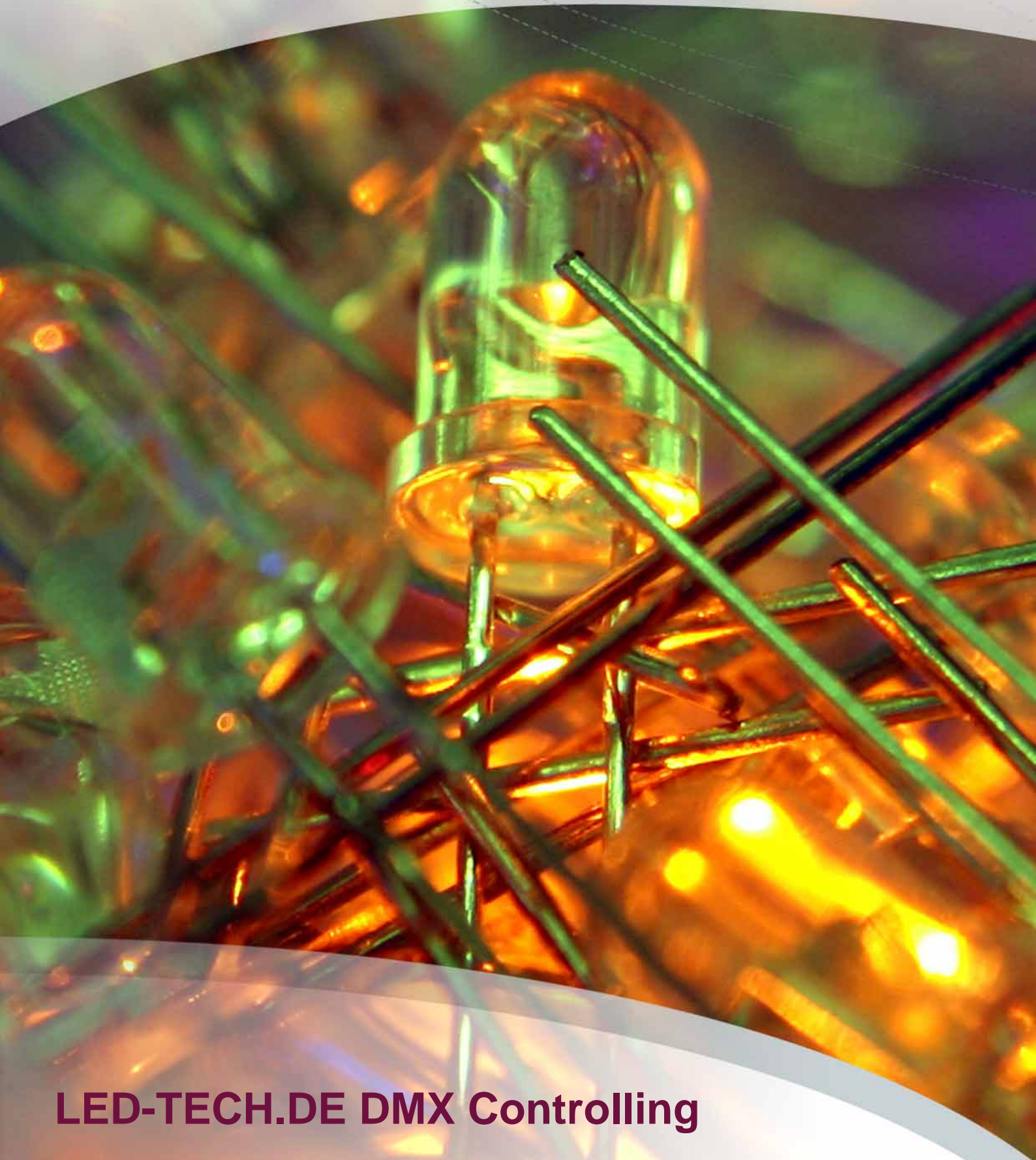


LED-TECH.DE

OPTOELECTRONICS



LED-TECH.DE DMX Controlling

MultiLine DMX-Controller 24



Part Number: LT-0929

The Showtec Showmaster is a 24 channel DMX controller with 48 programmable & directly choosable programs spread over 4 banks with 999 scenes each. We believe that the Showmaster 24 controller is one of the easiest controllers ever and can also be used by newbies! The controller has the following features:

- 48 programs Up to 999 scenes per program
- Standard DMX 512 (3pin XLR) Midi in / out / thru 3 working level
- Mix-Chase functions: Different programs can run simultaneously
- Single-Chase Funktion: Programs run one after another
- Blind-Home-Funktion "Tap to Sync" Funktion (Beat can be adjusted manually)
- Black Out Funktion
- Speed- und Fade-Controll by fading potentiometer
- Sound-to-Light Funktion (integrated micro or Line-In)
- Music sensitivity adjustable by fading potentiometer
- Adjustable fading times

Dimensions: 19" / 6HE / 10cm depth
Weight: ~4.5Kg

The perfect controller for PAR spots with dimmer packs or multi-channel DMXable light effects.

What is DMX?

DMX512, often shortened to DMX (Digital MultipleX), is a communications protocol used mainly to control stage lighting. It is a form of the RS-485 architecture.

Developed by the Engineering Commission of USITT, the standard started in 1986, with subsequent revisions in 1990 leading to USITT DMX512/1990. ESTA took control of the standard in 1998 and began a revision process. The new standard, known officially as "Entertainment Technology & USITT DMX512‐A ‐ Asynchronous Serial Digital Data Transmission Standard for Controlling Lighting Equipment and Accessories", was approved by ANSI in November, 2004. This current standard is also known as "E1.11, USITT DMX512‐A", or just "DMX512-A", and is maintained by ESTA.

DMX512 was originally intended as a 'lowest common denominator' protocol for use between interfaces supporting proprietary protocols. However, it soon became the primary method for not only linking controllers and dimmers, but also linking more advanced fixtures and special effects devices such as fog machines and moving lights. As DMX512 is unidirectional and does not allow for a response it must not be used for any type of use involving life safety, such as controlling pyrotechnics. MIDI is sometimes used for this task.

About DMX:

DMX512's popularity is partly due to its sturdiness. The cable can be abused in ways that would render Ethernet or other high speed data cables useless without any loss in function. Many people do not use the terminating plugs since without them a break in the Data Plus (Pin 3) or Data Minus (Pin2) cable may not affect the operation of the fixtures. Strange behaviour on the parts of the fixtures is usually due to incorrect addressing, cable faults, or the wrong data from the controller. Cable faults can occasionally give very surreal intermittent problems such as fixtures twitching.



The two Secondary Data Link pins on the five-pin connectors were originally intended for sending a second Universe of data, however this has never been implemented, and some manufacturers did some improvements and made units with 3 pin connectors. DMX512-A specifies that the connector is to be a 5-pin XLR connector, however many foreign companies do not follow this American standard. Some companies used the extra pins to carry other data or power. However DMX512-A forbids using the extra pins to send power, as this could damage devices expecting other types of signals on these pins. Thus many lighting rigs need a number of small adaptors which can be frequent points of failure. Some companies prefer five-pin connectors as it makes it harder to confuse sound and lighting cables.

If a single DMX512 channel is used to control pan on a Martin Mac 500, which has 440° of pan, then an increase of 1 would result in a movement of 1.7°. Over a long throw (distance between the fixture and the projection surface) this amount of movement can result in a significant movement of the beam. To control position more accurately Macs and other fixtures use 2 channels each for pan and tilt. This gives a 16-bit value between 0 and 65535 for each movement axis.

Using these type of devices on older lighting controllers would result in two adjacent channel controls being used to adjust a single movement axis. One would be referred to as the coarse and the other as fine, reflecting the relative amount of movement control each channel had. The coarse channel would allow values in multiples of 256, such as 0, 256, 512, 1024, all the way up to 65280. The fine channel allows the addressing of all in between values, by adding between 1 and 255 to the value obtained by the coarse channel.

Recently, wireless DMX adapters have become popular, especially in architectural lighting installations, where cable lengths would be prohibitively long (Over approximately 1024 feet). Wireless DMX generally uses WLAN technology to transfer the DMX data, with strategically placed converters bridging the signal back to wired links.

MultiLine DMX Cable 1m



1m DMX (extension) cable. High quality screened version.

Part Number: LT-0931

Housing Color: black



MultiLine DMX Cable 3m



3m DMX (extension) cable. High quality screened version.

Part Number: LT-0932

Housing Color: black



MultiLine XLR DMX Connector Male

XLR DMX cable connector (male) for own cable constructions and extensions.



Part Number: LT-0933

Belegung XLR-Verbinder
Kupplung Stecker

1 - Masse/Schirm	1 - +
2 - Kanal -	2 - -
3 - Kanal +	3 - +

Bei unsymmetrischem
Gehäuse werden Pin 1 und Pin
3 gebrückt.

MultiLine XLR DMX Connector Female

XLR DMX connector (female) for own cable constructions and extensions.



Part Number: LT-0934

Belegung XLR-Verbinder



Bei unsymmetrischem
Gehäuse werden Pin 1 und Pin
3 gebrückt.

MultiLine DMX Interface (9kanal / 3xRGB)



Part Number: LT-0935

V typ.: 7-30 V

DMX is a worldwide standard for effect lighting. To make your own LED applications run on DMX you formerly had to accept a lot of circumstances because LEDs have special technical parameters.

This was the reason to create a new cascable 9 channel DMX Interface that allows you to control up to 288 channels. The common power input for interface and LEDs increases to possible number of illuminants to a maximum. We knowingly chose a 9 channel layout to provide upcoming RGB applications and their developers as well as their users.

Further technical data:

- NEW: Combined interface- and LED power inputs
- NEW. Switchable polarity for max. flexibility
- Max. capacitance per channel: 10A
- Max. LED forward voltage: 35V DC
- Max. total capacitance of illuminants: 20A over soldering pads or 16A over clamps
- Power supply of interface: 7-30V DC
- Power consumption of interface: <100mA
- Short circuit protection: Yes
- Protokoll: DMX512 (/1990)
- Connection: Common anode
- Dimensions (LxWxH): 110x111x35mm

Further features in short form:

- Integrated jumperable 120 Ohm terminator for longer connection ways
- DMX IN and DMX OUT for looping through further DMX interfaces
- Maximum number of interfaces: 32
- PWM frequency at all outputs 125Hz (flicker free)
- Number of channels: 9 (up to 32 interfaces cascable). That means up to 288 channels adjustable over one DMX controller
- Adjustable starting address 1-512 by DIP switch. Please note the above linked help tutorial for setting start addresses
- 3-pole DMX (male and female) can be connected over soldering pins, too
- Dedicated IP65 housing (optional part) made from plastic with transparent cap (120x120x55mm)

What is DMX?

DMX512, often shortened to DMX (Digital MultipleX), is a communications protocol used mainly to control stage lighting. It is a form of the RS-485 architecture.

Developed by the Engineering Commission of USITT, the standard started in 1986,

with subsequent revisions in 1990 leading to USITT DMX512/1990. ESTA took control of the standard in 1998 and began a revision process. The new standard, known officially as "Entertainment Technology & USITT DMX512&A & Asynchronous Serial Digital Data Transmission Standard for Controlling Lighting Equipment and Accessories", was approved by ANSI in November, 2004. This current standard is also known as "E1.11, USITT DMX512&A", or just "DMX512-A", and is maintained by ESTA.

DMX512 was originally intended as a 'lowest common denominator' protocol for use between interfaces supporting proprietary protocols. However, it soon became the primary method for not only linking controllers and dimmers, but also linking more advanced fixtures and special effects devices such as fog machines and moving lights. As DMX512 is unidirectional and does not allow for a response it must not be used for any type of use involving life safety, such as controlling pyrotechnics. MIDI is sometimes used for this task.

About DMX:

DMX512's popularity is partly due to its sturdiness. The cable can be abused in ways that would render Ethernet or other high speed data cables useless without any loss in function. Many people do not use the terminating plugs since without them a break in the Data Plus (Pin 3) or Data Minus (Pin2) cable may not affect the operation of the fixtures. Strange behaviour on the parts of the fixtures is usually due to incorrect addressing, cable faults, or the wrong data from the controller. Cable faults can occasionally give very surreal intermittent problems such as fixtures twitching.

The two Secondary Data Link pins on the five-pin connectors were originally intended for sending a second Universe of data, however this has never been implemented, and some manufacturers did some improvements and made units with 3 pin connectors. DMX512-A specifies that the connector is to be a 5-pin XLR connector, however many foreign companies do not follow this American standard. Some companies used the extra pins to carry other data or power. However DMX512-A forbids using the extra pins to send power, as this could damage devices expecting other types of signals on these pins. Thus many lighting rigs need a number of small adaptors which can be frequent points of failure. Some companies prefer five-pin connectors as it makes it harder to confuse sound and lighting cables.

If a single DMX512 channel is used to control pan on a Martin Mac 500, which has 440° of pan, then an increase of 1 would result in a movement of 1.7°. Over a long throw (distance between the fixture and the projection surface) this amount of movement can result in a significant movement of the beam. To control position more accurately Macs and other fixtures use 2 channels each for pan and tilt. This gives a 16-bit value between 0 and 65535 for each movement axis.

Using these type of devices on older lighting controllers would result in two adjacent channel controls being used to adjust a single movement axis. One would be referred to as the coarse and the other as fine, reflecting the relative amount of movement control each channel had. The coarse channel would allow values in multiples of 256, such as 0, 256, 512, 1024, all the way up to 65280. The fine channel allows the addressing of all in between values, by adding between 1 and 255 to the value obtained by the coarse channel.

Recently, wireless DMX adapters have become popular, especially in architectural lighting installations, where cable lengths would be prohibitively long (Over approximately 1024 feet). Wireless DMX generally uses WLAN technology to transfer

the DMX data, with strategically placed converters bridging the signal back to wired links.

MultiLine DMX Cable 6m



6m DMX (extension) cable. High quality screened version.

Part Number: LT-0979

Housing Color: black



Imprint



LED-TECH.DE optoelectronics Showroom

Director: Stefan Lenz

Am Schürmannshütt 38B

D-47441 Moers

Phone: (+49) 2841 / 97 91 7-0

Fax: (+49) 2841 / 97 91 7-29



Further we want to point at pictures, graphics and descriptions as well as the pagelayout itself which are all subject to copyright. Every offence will be prosecuted.

All mentioned prices are to be understood as gross prices including the value added tax (TAV). All offers are subject to prior sales and without commitment. Delivery times are to be understood from date of receipt of order. Mistakes and changes in prices are always reserved.



