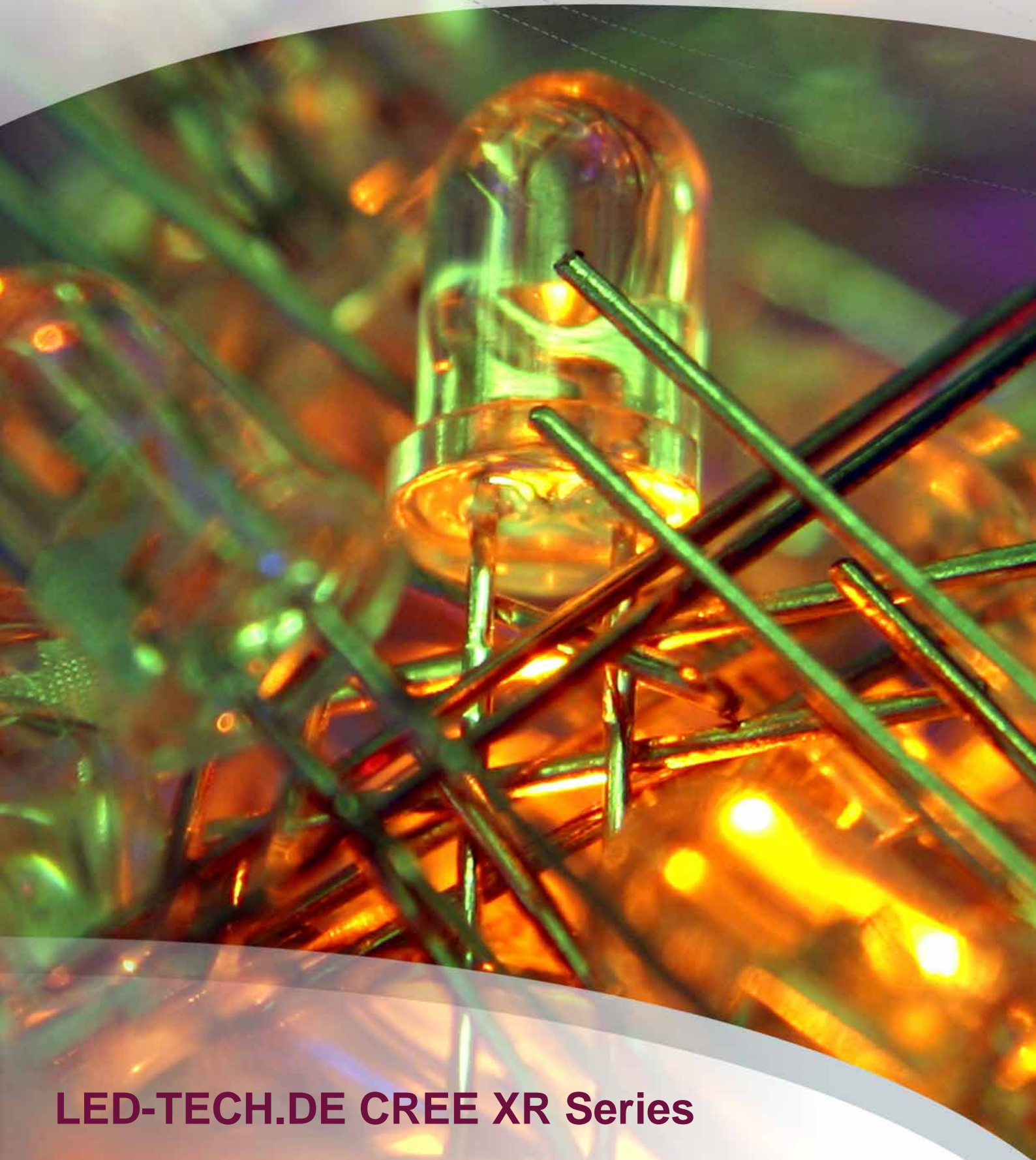


LED-TECH.DE

OPTOELECTRONICS



LED-TECH.DE CREE XR Series

CREE XR-E 7090 Q2 Emitter (warm white)



New: Q2 Chip in warm-white!

High end SMD technology with fused quartz lens

Cree is one of the pioneers in the development and manufacture of extremely bright and reliable LEDs. The XLamps are up to 50% brighter than other products available in the market. The XLamp product family has integrated Cree High-Power LEDs with innovative SMD (Surface Mounted Device) packaging technology. The resulting product offers optimal conditions for light solutions on LED technology basis at an unrivalled competitive price.

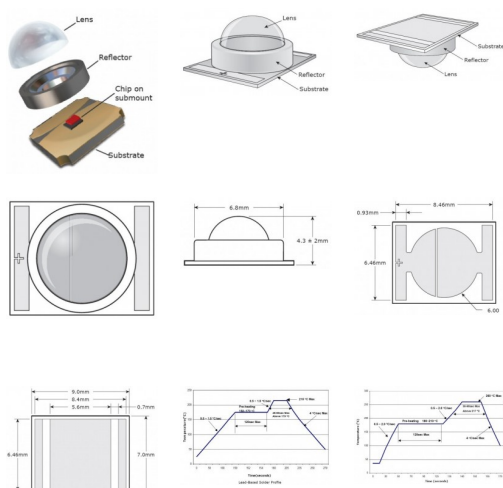
What makes the XLamps special?

- Driveable up to 700mA
- SMD technology
- Reflow solderable
- Finest selections
- Low operating voltages
- Integrated fused quartz lens
- Dimensions only 7.0x9.0mm
- ESD > 2000V

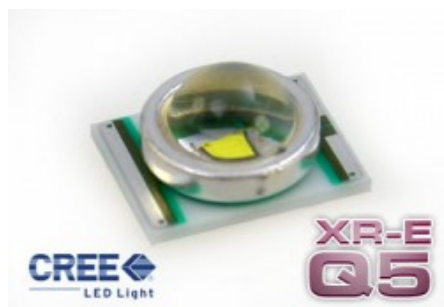
Of course the XLamp series complies with RoHS criteria too.

Tip: If you are new in SMD technologies we would like to suggest the ready-to-use version of the XLamp. The LED is already mounted on a heat sink with two connection cables.

{warning1}



CREE XR-E 7090 Q5 Emitter (white)



High end SMD technology with fused quartz lens

Cree is one of the pioneers in the development and manufacture of extremely bright and reliable LEDs. The XLamps are up to 50% brighter than other products available in the market. The XLamp product family has integrated Cree High-Power LEDs with innovative SMD (Surface Mounted Device) packaging technology. The resulting product offers optimal conditions for light solutions on LED technology basis at an unrivalled competitive price.

What makes the XLamps special?

- Driveable up to 1000mA
- SMD technology
- Reflow solderable
- Finest selections
- Low operating voltages
- Integrated fused quartz lens
- Dimensions only 7.0x9.0mm
- ESD > 2000V

Current vs. Lumen:

350mA: 107~114lm

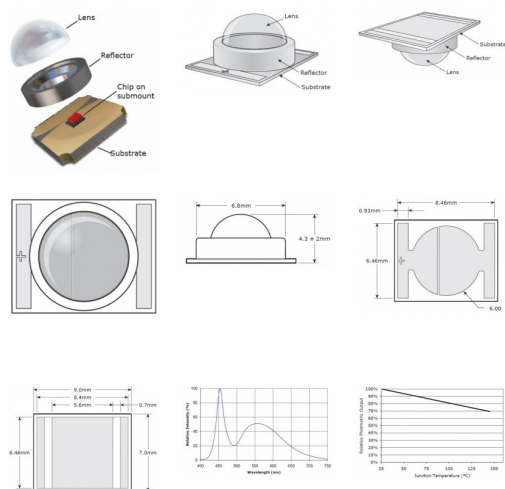
700mA: 171.2~182.4lm

1000mA: 214 ~ 228lm

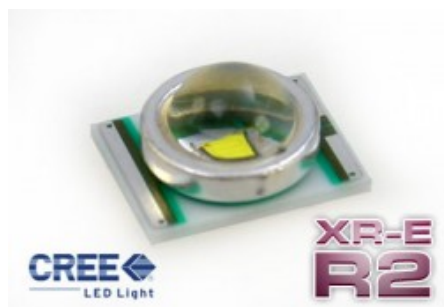
Of course the XLamp series complies with RoHS criteria too.

Tip: If you are new in SMD technologies we would like to suggest the ready-to-use version of the XLamp. The LED is already mounted on a heat sink with two connection cables.

{warning1}



CREE XR-E 7090 R2 Emitter (white)



Part Number: LT-1331

Diameter: 6.8mm

Viewing Angle: 90°

Housing Color: clear

Emitting Color: white

Lumen min.: 114 mcd

Lumen max.: 242 mcd

Kelvin min.: 5700 mcd

Kelvin max.: 6350 mcd

mA test.: 350 mcd

mA typ.: 350 mA

mA max.: 1000 mA

V typ.: 3.5 V

V max.: 4.0 V

New XR-E in R2 version!

High end SMD technology with fused quartz lens

Cree is one of the pioneers in the development and manufacture of extremely bright and reliable LEDs. The XLamps are up to 50% brighter than other products available in the market. The XLamp product family has integrated Cree High-Power LEDs with innovative SMD (Surface Mounted Device) packaging technology. The resulting product offers optimal conditions for light solutions on LED technology basis at an unrivalled competitive price.

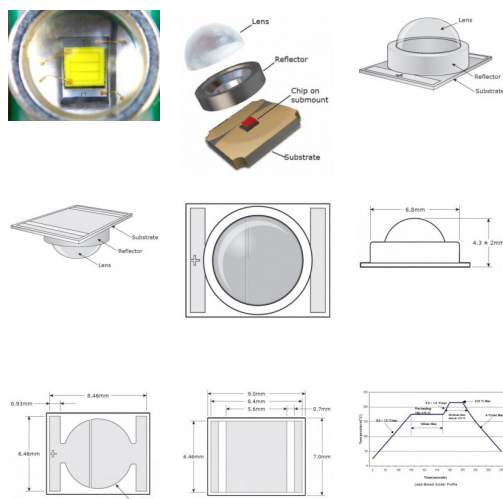
What makes the XLamps special?

- Driveable up to 1000mA
- SMD technology
- Reflow solderable
- Finest selections
- Low operating voltages
- Integrated fused quartz lens
- Dimensions only 7.0x9.0mm
- ESD > 2000V

Of course the XLamp series complies with RoHS criteria too.

Tip: If you are new in SMD technologies we would like to suggest the ready-to-use version of the XLamp. The LED is already mounted on a heat sink with two connection cables.

{warning1}



CREE XR-E 7090 R2 on Star PCB (white)



Part Number: LT-1381

Diameter: 19,9mm

Viewing Angle: 90°

Housing Color: clear

Emitting Color: white

Lumen min.: 114 mcd

Lumen max.: 242 mcd

Kelvin min.: 5700 mcd

Kelvin max.: 6350 mcd

mA test.: 350 mcd

mA typ.: 350 mA

mA max.: 1000 mA

V typ.: 3.5 V

V max.: 4.0 V

New XR-E in R2 version!

High end SMD technology with fused quartz lense

Cree is one of the pioneers in the development and manufacture of extremely bright and reliable LEDs. The XLamps are up to 50% brighter than other products available in the market. The XLamp product family has integrated Cree High-Power LEDs with innovative SMD (Surface Mounted Device) packaging technology. The resulting product offers optimal conditions for light solutions on LED technology basis at an unrivalled competitive price.

What makes the XLamps special?

- Driveable up to 1000mA
- SMD technology
- Reflow solderable
- Finest selections
- Low operating voltages
- Integrated fused quartz lense
- Dimensions only 7.0x9.0mm
- ESD > 2000V

Of course the XLamp series complies with RoHS criteria too. The PCB diameter is 20mm.

{warning1}

CREE XR-E 7090 Q5 on Star PCB (white)



Part Number: LT-1397

Diameter: 19,9mm

Viewing Angle: 90°

Housing Color: clear

Emitting Color: white

Lumen min.: 107 mcd

Lumen max.: 228 mcd

Kelvin min.: 5700 mcd

Kelvin max.: 6350 mcd

mA test.: 350 mcd

mA typ.: 350 mA

mA max.: 1000 mA

V typ.: 3.5 V

V max.: 4.0 V

New XR-E in Q5 selection on PCB!

High end SMD technology with fused quartz lense

Cree is one of the pioneers in the development and manufacture of extremely bright and reliable LEDs. The XLamps are up to 50% brighter than other products available in the market. The XLamp product family has integrated Cree High-Power LEDs with innovative SMD (Surface Mounted Device) packaging technology. The resulting product offers optimal conditions for light solutions on LED technology basis at an unrivalled competitive price.

What makes the XLamps special?

- Driveable up to 1000mA
- SMD technology
- Reflow solderable
- Finest selections
- Low operating voltages
- Integrated fused quartz lense
- Dimensions only 7.0x9.0mm
- ESD > 2000V

Of course the XLamp series complies with RoHS criteria too. The PCB diameter is 20mm.

{warning1}

CREE XR-E 7090 Q2 on Star PCB (warm white)



Part Number: LT-1497

Diameter: 19,9mm

Viewing Angle: 90°

Housing Color: clear

Emitting Color: warm white

Lumen min.: 87,4 mcd

Lumen max.: 160 mcd

Kelvin min.: 3000 mcd

Kelvin max.: 3200 mcd

mA test.: 350 mcd

mA typ.: 350 mA

mA max.: 700 mA

V typ.: 3.5 V

V max.: 4.0 V

High end SMD technology with fused quartz lense

Cree is one of the pioneers in the development and manufacture of extremely bright and reliable LEDs. The XLamps are up to 50% brighter than other products available in the market. The XLamp product family has integrated Cree High-Power LEDs with innovative SMD (Surface Mounted Device) packaging technology. The resulting product offers optimal conditions for light solutions on LED technology basis at an unrivalled competitive price.

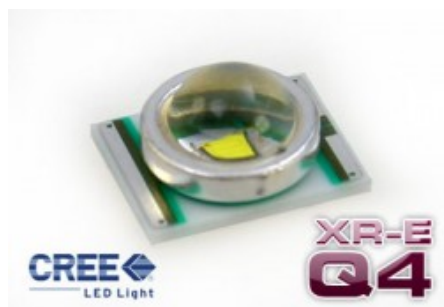
What makes the XLamps special?

- Driveable up to 700mA
- SMD technology
- Reflow solderable
- Finest selections
- Low operating voltages
- Integrated fused quartz lense
- Dimensions only 7.0x9.0mm
- ESD > 2000V

Of course the XLamp series complies with RoHS criteria too. The PCB diameter is 20mm.

{warning1}

CREE XR-E 7090 Q4 Emitter (daylight white)



New: Q4 Chip in neutral-white!

High end SMD technology with fused quartz lens

Cree is one of the pioneers in the development and manufacture of extremely bright and reliable LEDs. The XLamps are up to 50% brighter than other products available in the market. The XLamp product family has integrated Cree High-Power LEDs with innovative SMD (Surface Mounted Device) packaging technology. The resulting product offers optimal conditions for light solutions on LED technology basis at an unrivalled competitive price.

Part Number: LT-1530

Diameter: 6.8mm

Viewing Angle: 90°

Housing Color: clear

Emitting Color: daylight white

Lumen min.: 100 mcd

Lumen max.: 182 mcd

Kelvin min.: 4300 mcd

Kelvin max.: 4500 mcd

mA test.: 350 mcd

mA typ.: 350 mA

mA max.: 700 mA

V typ.: 3.5 V

V max.: 4.0 V

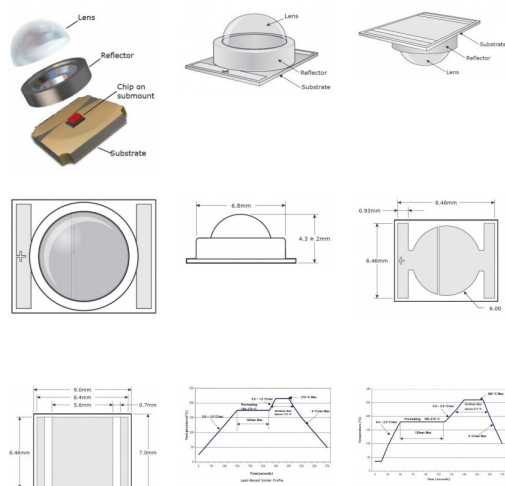
What makes the XLamps special?

- Driveable up to 700mA
- SMD technology
- Reflow solderable
- Finest selections
- Low operating voltages
- Integrated fused quartz lens
- Dimensions only 7.0x9.0mm
- ESD > 2000V

Of course the XLamp series complies with RoHS criteria too.

Tip: If you are new in SMD technologies we would like to suggest the ready-to-use version of the XLamp. The LED is already mounted on a heat sink with two connection cables.

{warning1}



CREE XR-E 7090 Q4 on Star PCB (daylight white)



Part Number: LT-1531

Diameter: 19,9mm

Viewing Angle: 90°

Housing Color: clear

Emitting Color: daylight white

Lumen min.: 100 mcd

Lumen max.: 182 mcd

Kelvin min.: 4300 mcd

Kelvin max.: 4500 mcd

mA test.: 350 mcd

mA typ.: 350 mA

mA max.: 700 mA

V typ.: 3.5 V

V max.: 4.0 V

New: Q4 Chip in neutral-white!

High end SMD technology with fused quartz lense

Cree is one of the pioneers in the development and manufacture of extremely bright and reliable LEDs. The XLamps are up to 50% brighter than other products available in the market. The XLamp product family has integrated Cree High-Power LEDs with innovative SMD (Surface Mounted Device) packaging technology. The resulting product offers optimal conditions for light solutions on LED technology basis at an unrivalled competitive price.

What makes the XLamps special?

- Driveable up to 700mA
- SMD technology
- Reflow solderable
- Finest selections
- Low operating voltages
- Integrated fused quartz lense
- Dimensions only 7.0x9.0mm
- ESD > 2000V

Of course the XLamp series complies with RoHS criteria too. The PCB diameter is 20mm.

{warning1}

Imprint



LED-TECH.DE optoelectronics Showroom

Director: Stefan Lenz

Am Schürmannshütt 38B

D-47441 Moers

Phone: (+49) 2841 / 97 91 7-0

Fax: (+49) 2841 / 97 91 7-29



Further we want to point at pictures, graphics and descriptions as well as the pagelayout itself which are all subject to copyright. Every offence will be prosecuted.

All mentioned prices are to be understood as gross prices including the value added tax (TAV). All offers are subject to prior sales and without commitment. Delivery times are to be understood from date of receipt of order. Mistakes and changes in prices are always reserved.



