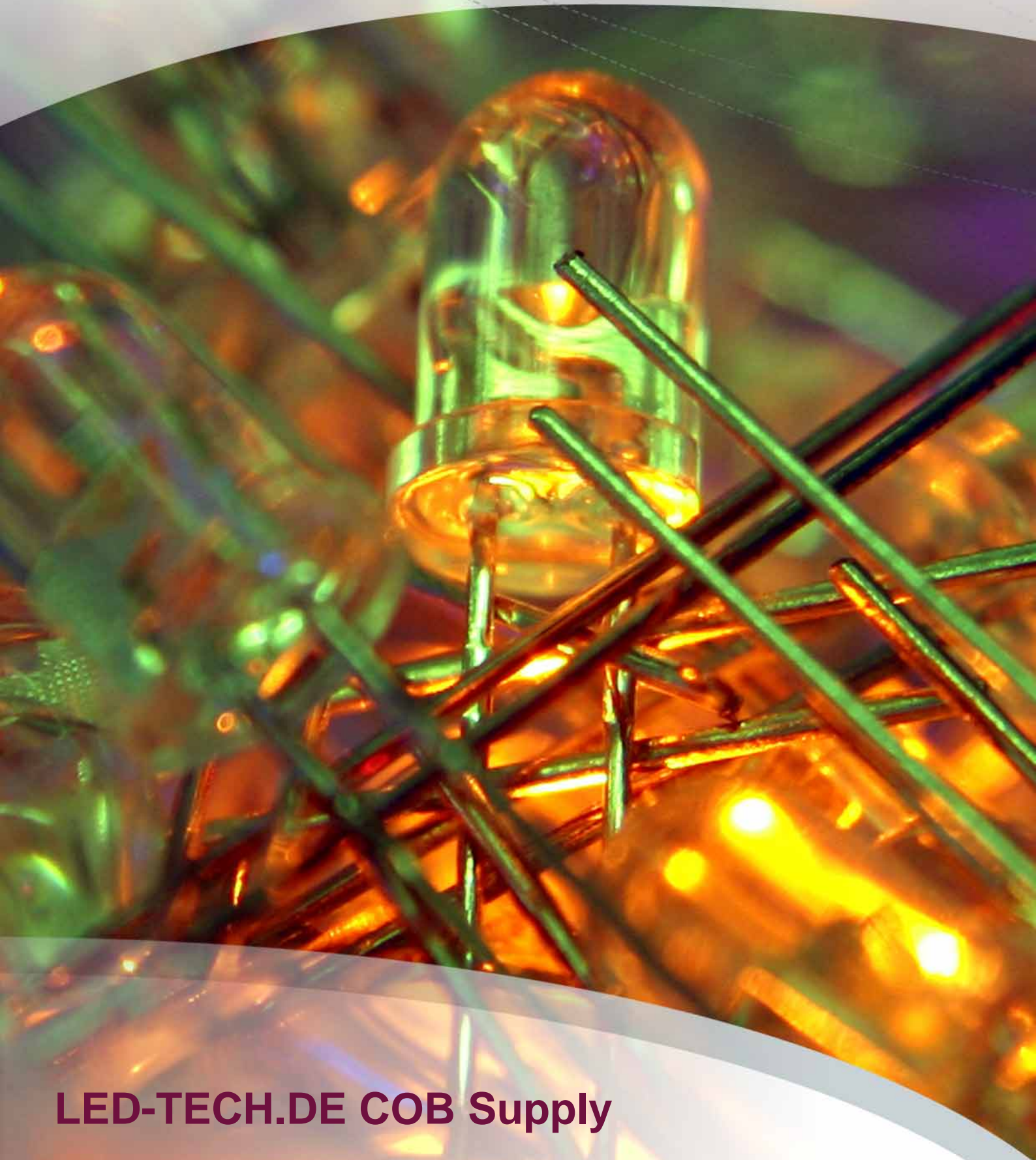


# LED-TECH.DE

OPTOELECTRONICS



**LED-TECH.DE COB Supply**

## 15° lense for 3,5W and 7W COB modules



Part Number: LT-1420

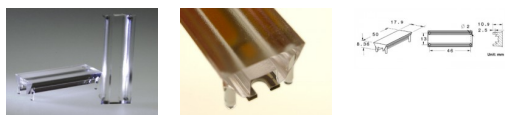
Viewing Angle: 15°

Housing Color: transparent

High performance plug-on lense for above mentioned COB modules made from PMMA HT for operating temperatures from -40°C up tp +110°C.

Technical remark:

Because of the small dimensions the lense pins do not fit onto the COB module. This is why we recommend to use an additional wider mounting medium like aluminium to mount the COB module on. That is a good basis to drill the holes for the lense pins in. Of course you can also glue the lense onto the COB module.



## 30° lense for 3,5W and 7W COB modules



High performance plug-on lense for above mentioned COB modules made from PMMA HT for operating temperatures from -40°C up tp +110°C.

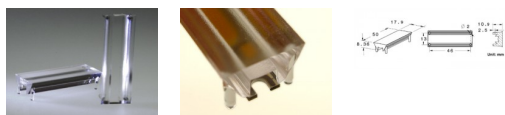
Technical remark:

Because of the small dimensions the lense pins do not fit onto the COB module. This is why we recommend to use an additional wider mounting medium like aluminium to mount the COB module on. That is a good basis to drill the holes for the lense pins in. Of course you can also glue the lense onto the COB module.

Part Number: LT-1421

Viewing Angle: 30°

Housing Color: transparent



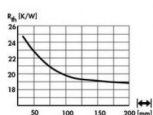
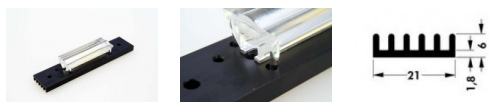
## Heat Sink for 3,5W COB modules



The black anodized aluminium cooler has especially been improved for the 3,5W COB modules. The surface has also been styled for those, too. There are two middle drill holes for fixing the COB module and four holes for an optic which you can also find under the above mentioned link. You will also find four further drill holes for mounting or cable feedthrough.

Part Number: LT-1496

Housing Color: black



# Imprint



LED-TECH.DE optoelectronics Showroom

Director: Stefan Lenz

Am Schürmannshütt 38B

D-47441 Moers

Phone: (+49) 2841 / 97 91 7-0

Fax: (+49) 2841 / 97 91 7-29

Further we want to point at pictures, graphics and descriptions as well as the pagelayout itself which are all subject to copyright. Every offence will be prosecuted.

All mentioned prices are to be understood as gross prices including the value added tax (TAV). All offers are subject to prior sales and without commitment. Delivery times are to be understood from date of receipt of order. Mistakes and changes in prices are always reserved.



