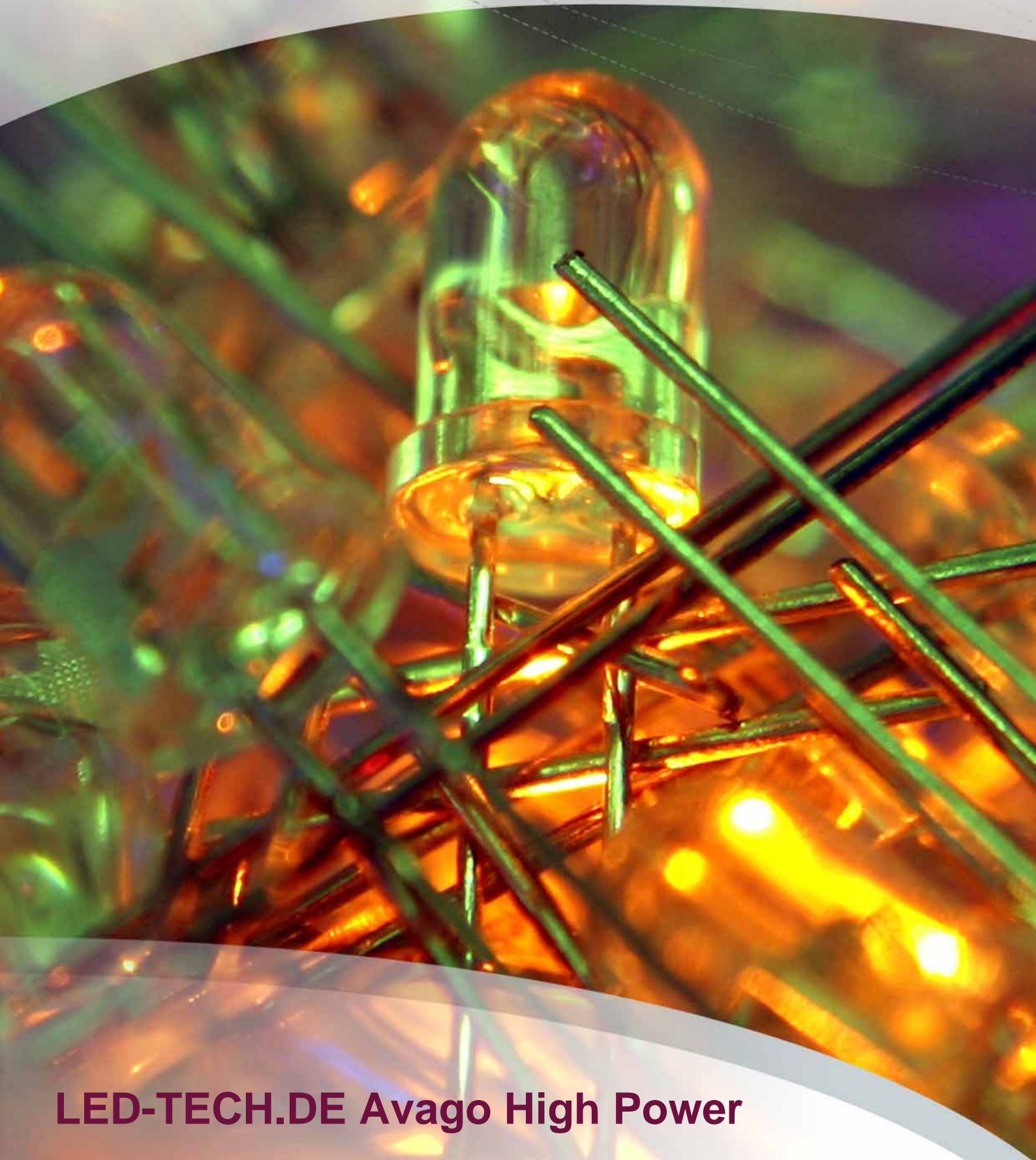


LED-TECH.DE

OPTOELECTRONICS



LED-TECH.DE Avago High Power

Avago Moonstone Tri-Color Power LED (red / green / blue)



The Moonstone™ Tri-Color Power LED Light Source is a high performance energy efficient device which can handle high thermal and high driving current. The exposed pad design enables excellent heat transfer from the package to the motherboard.

The low profile package design is suitable for a wide variety of applications especially where height is a constraint. The package is compatible with reflow soldering process. This will give more freedom and flexibility to the light source designer. The above mentioned values are cumulative for all chips.

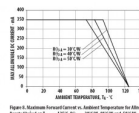
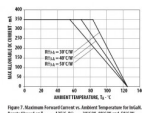
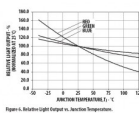
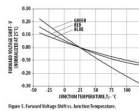
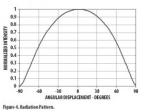
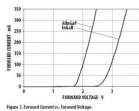
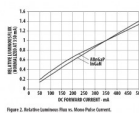
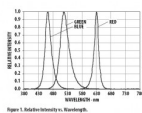
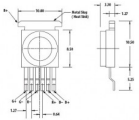
The advantages:

- Long lifetime
- Wide viewing angle
- silicone encapsulation
- Non-ESD sensitive (threshold >16KV)
- Junction temperature: 125°C (max.)
- Big cooling pads for best thermal conduction

Possible point of use:

- _ Architectural lighting
- Garden lighting
- In-Mood lighting
- Commercial lighting

{warning1}



Imprint



LED-TECH.DE optoelectronics Showroom

Director: Stefan Lenz

Am Schürmannshütt 38B

D-47441 Moers

Phone: (+49) 2841 / 97 91 7-0

Fax: (+49) 2841 / 97 91 7-29

Further we want to point at pictures, graphics and descriptions as well as the pagelayout itself which are all subject to copyright. Every offence will be prosecuted.

All mentioned prices are to be understood as gross prices including the value added tax (TAV). All offers are subject to prior sales and without commitment. Delivery times are to be understood from date of receipt of order. Mistakes and changes in prices are always reserved.

